

*Appendix no. 7 to Final Report on Implementation of the Land Acquisition and Resettlement Action Plan – photographic records*

Contract: "Łęg IV – extension of the left river embankment at chainage km 0+082-5+030 within the Commune of Gorzyce, and of the right embankment at chainage km 0+000-5+236 within the Commune of Gorzyce"

## Photographic records

The photos show: the state of the project area as at November 30, 2020, i.e. before the start of the project (left side) and as at 08/04/2023 after the end of implementation (right side).

Part I. Photos of the left embankment of the **Łęg** River at km 0+082 - 5+030.

Photos from km 0+082 (from the Vistula river) to the Orlińska – Gorzyce bridge)



Photo no. 1: Start of left-side embankments, utility building.



Photo no. 2: Foundations to be removed.



Photo no. 3: HV line network passing through the investment area.



Photo no. 4: Crossroad – gravel road and asphalt road, running along the top of the embankments.



Photo no. 5: Culvert, gate valve on the watercourse running through the embankment, with a view of the bridge over the Łęg river in the background, DK 77 (Sandomierska Street)



Photo no. 6: SWH PW pumping station, Strug watercourse.



Photo no. 7: Discharge of water from the SWH PW pumping station into the embanked area.



Photo no. 8: Surface water in the embanked area, embankment, road by the embankment on the downstream side.



Photo no. 9: Embankment, gravel road, HV line, adjacent areas.

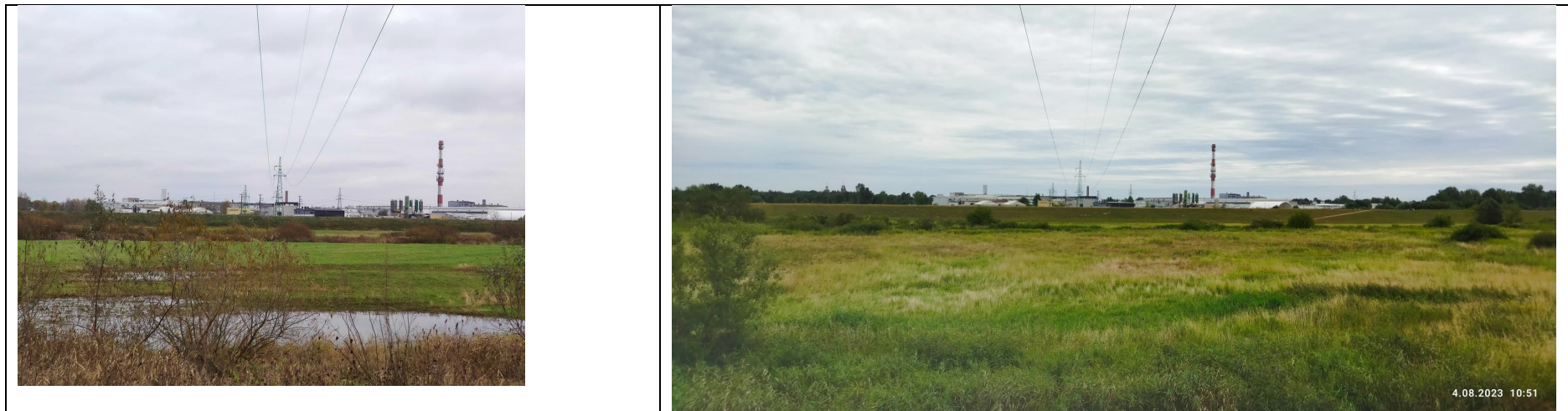


Photo no. 10: View to the embanked area, Łęg River, industrial areas in the distance.

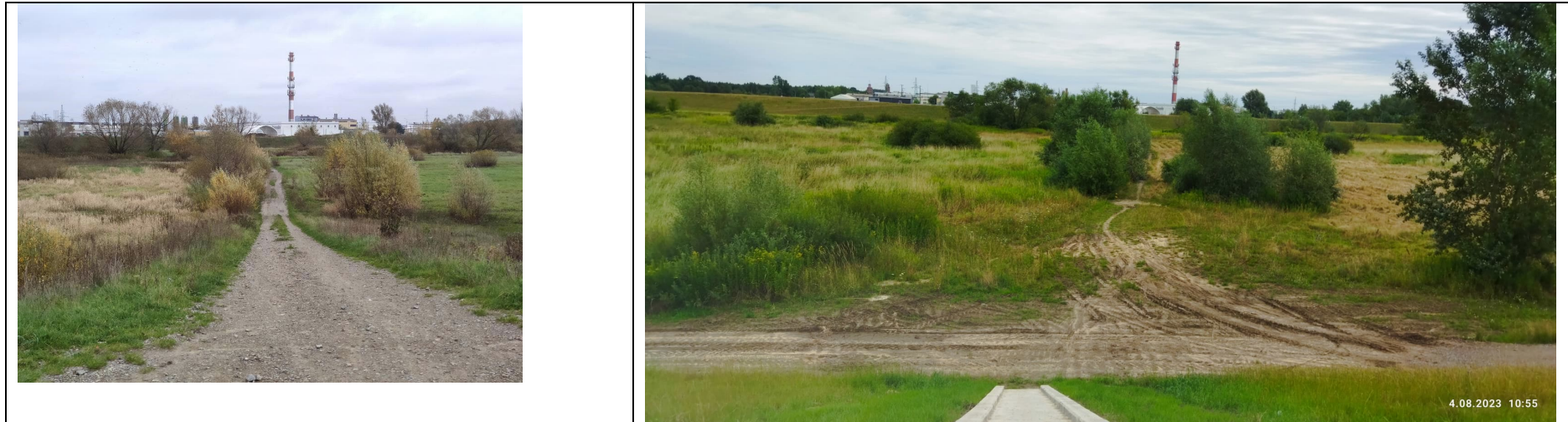


Photo no. 11: Road in the embanked area, access to pedestrian bridge.



Photo no. 12: End of investment – Orlińska – Gorzyce road.

Part II. Photos of the right embankment of the **Łęga** River at km 0+000 - 5+236.

Photos from km 5+236 (from Orlińska – Gorzyce bridge to the Vistula River)



Photo no. 1: Bridge over the Łęg River, Orliśka – Gorzyce road.



Photo no. 2: View of the Bridge and the culverts in the embanked area.





Photo no. 3: Road junction with entrance to embankments, gas reduction station in the distance.



Photo no. 4: Reinforcement of the crossing across the embankment.



Photo no. 5: Entrance to the embankment at the treatment plant (asphalt surface).



Photo no. 6: Treatment plant buildings.



Photo no. 7: Water outflow from the treatment plant, bridge.



Photo no. 8: Rainwater outflow, treatment plant building in the distance.



Photo no. 9: Asphalt road exit from the embankments, photovoltaic farm in the distance.



Photo no. 10: View of the pedestrian bridge from the right-side embankments.



Photo no. 11: Embankment culvert, gate valve.



Photo no. 12: Culvert on the side of the embanked area, gate valve, HV line to be reconstructed in the distance.



Photo no. 13: Embankment, road, MV and HV network poles to be reconstructed.



Photo no. 14: View from DK 77, Right-side embankment, steps of embankment to Podwale Street, buildings adjacent to existing embankments.



Photo no. 15: Podwale Street.



Photo no. 16: Culvert under Podwale Street.



Photo no. 17: Drainage from the culvert on the side of the embanked area (Podwale Street).



Photo no. 18: Cross on the investment site, road, buildings close to the investment.



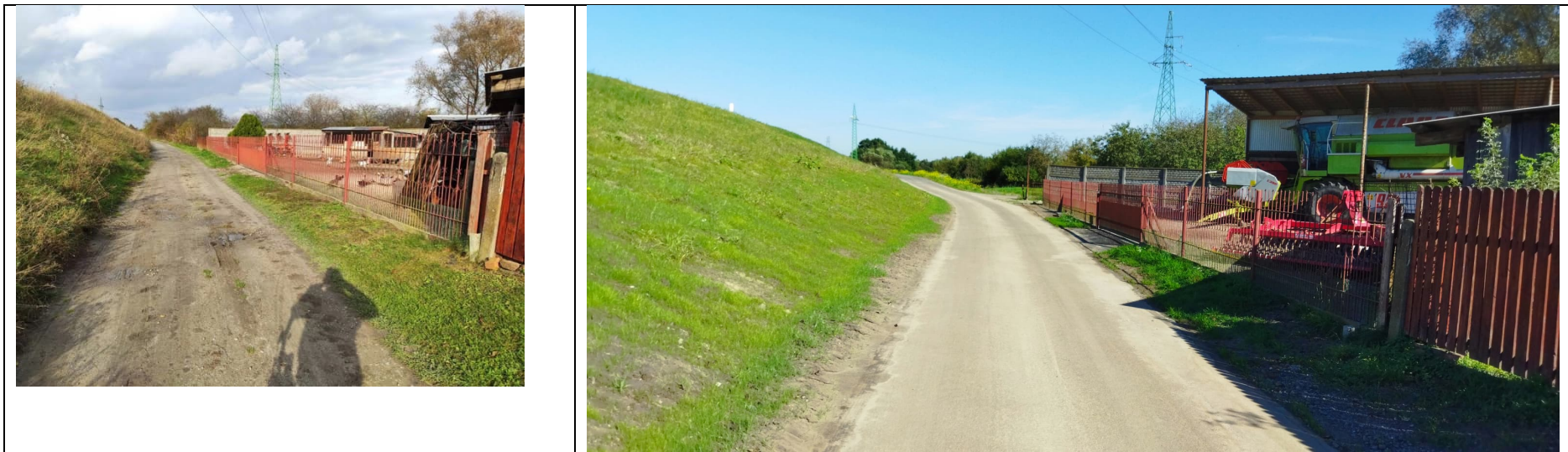


Photo no. 19: Road by right embankment, fences to be reconstructed, HV network pole in the distance.

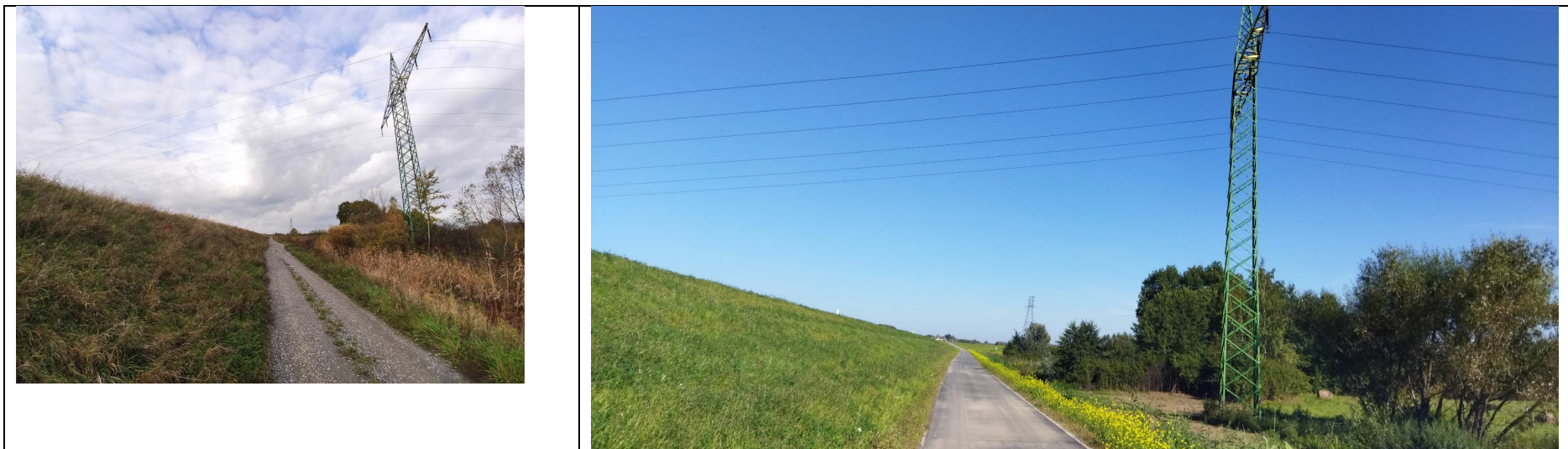


Photo no. 20: Right embankment, the road by the embankment, HV line pole passing through the embanked area of the Łęg River.



Photo no. 21: Embankment culvert, gate valve, HV line.



Photo no. 22: Fruit orchards along the embankment road.



Photo no. 23: Start of the project at the right-side embankment (by the Vistula river).