

PHOTO DOCUMENTATION for Task 3

Appendix no. 2a
to the Final Report on implementation of measures determined in EMP
for the Contract 3B.1/1

Odra-Vistula Flood Management Project

OVFMP Subcomponent	3B Protection of Sandomierz and Tarnobrzeg
Contract Task	3B.1/1 Flood Protection Sandomierz – completion of Tasks 3 and 4
Investor / Project Implementation Unit	State Water Holding Polish Waters Regional Water Management Authority in Cracow 22. Marszałka J. Piłsudskiego Street, 31-109 Cracow, Poland
Project Implementation Office (PIO)	Project Implementation Office in Cracow – branch in Kielce 5. Robotnicza Street, 25-662 Kielce, Poland
Contractor of Works	MELBUD Spółka Akcyjna 4. Składowa Street, 86-300 Grudziądz, Poland
Engineer	AECOM Polska Sp. z o.o. Project Office: 86A. Chwałki Street, 27-600 Sandomierz, Poland

This document – forming **Appendix no. 2a** to the *Final Report on implementation of measures determined in the Environmental Management Plan for Contract 3B.1/1*¹ (reporting period: February 11, 2020 – December 31, 2022), presents a photo documentation regarding implementation of the EMP in the scope of Task 3.

¹ See clarifications referring to the Environmental Management Plan (EMP) for Contract 3B.1/1 given in a footnote to the introduction to this Report.



Fig. 1. Site condition in the first quarter of the works implementation period on Task 3 – planned flood gate on the port channel in Sandomierz, status in the third decade of February 2020 (view towards the west).



Fig. 2. Site condition in the first quarter of the works implementation period on Task 3 – band embankment within the artery of Mostowa Street, status in the second decade of February 2020 (view towards the north-east).



Fig. 3. Site condition in the first quarter of the works implementation period on Task 3 – band embankment within the artery of Mostowa Street, status in the second decade of February 2020 (view towards the north-east).



Fig. 4. Site condition in the first quarter of the works implementation period on Task 3 – band embankment within the artery of Portowa Street, status in the second decade of February 2020 (view towards the south-west).



Fig. 5. Site condition in the first quarter of the works implementation period on Task 3 – band embankment within the artery of Zarzekowice Street, status in the second decade of February 2020 (view towards the north-east).



Fig. 6. Site condition in the first quarter of the works implementation period on Task 3 – band embankment between Zarzekowice Street and the right embankment of Vistula, status in the second decade of February 2020 (view towards the south-west).



Fig. 7. Site condition in the first quarter of the works implementation period on Task 3 – band embankment between Zarzekowice Street and the right embankment of Vistula, status in the second decade of February 2020 (view towards the north-east).



Fig. 8. Site condition in the first quarter of the works implementation period on Task 3 – right-bank Vistula embankment along the bank of the port channel, status in the second decade of March 2020 (view towards the north-east).



Fig. 9. Site facilities at the flood gate on the port channel in Sandomierz, status in the third decade of July 2020 (view towards the south-east).



Fig. 10. Storage yard at the band embankment within the artery of Portowa Street, status in the second decade of October 2021 (view towards the north-east).



Fig. 11. Marking of the construction site
– flood gate on the port channel in Sandomierz,
status in the second decade of April 2020 (view towards the west).



Fig. 12. Marking of the construction site
– band embankment between Zarzekowice Street and the right embankment
of Vistula, status in the third decade of July 2020 (view towards the south-west).



Fig. 13. Protection of hazardous sites
– flood gate on the port channel in Sandomierz,
status in the third decade of September 2022 (view towards the south-west).



Fig. 14. Protection of hazardous sites
– band embankment within the artery of Zarzekowice Street,
status in the third decade of May 2022 (view towards the south-west).



Fig. 15. Marking of public road near the exit from the construction site – band embankment within the artery of Mostowa Street, status in the third decade of March 2020 (view towards the south-west).



Fig. 16. Marking of public road near the exit from the construction site – band embankment within the artery of Zarzekowice Street, status in the third decade of May 2022 (view towards the south-west).



Fig. 17. Marking of Natura 2000 site
– access road to the work site on the right-bank Vistula embankment,
status in the third decade of March 2020 (view towards the north-east).



Fig. 18. Marking of Natura 2000 site
– flood gate on the port channel in Sandomierz,
status in the third decade of July 2021 (view towards the north-west).



Fig. 19. Protection of trees and shrubs not intended to felling
– band embankment within the artery of Mostowa Street,
status in the third decade of March 2020 (view towards the north-east).



Fig. 20. Protection of trees and shrubs not intended to felling
– band embankment within the artery of Zarzekowice Street,
status in the second decade of December 2021 (view towards the north-east).



Fig. 21. Protection of top-soil piles
– band embankment between Zarzekowice Street and the right embankment of Vistula, status in the second decade of March 2020 (view towards the south-west).



Fig. 22. Protection of top-soil piles
– right-bank Vistula embankment along the bank of the port channel, status in the third decade of March 2020 (view towards the south-west).



Fig. 23. Construction of a cement-bentonite barrier
– band embankment within the artery of Mostowa Street,
status in the third decade of March 2020 (view towards the south-west).



Fig. 24. Construction of a cement-bentonite barrier
– band embankment within the artery of Zarzekowice Street,
status in the first decade of April 2022 (view towards the north-east).



Fig. 25. Construction of a retaining wall made of steel sheet piles – band embankment within the artery of Mostowa Street, status in the second decade of September 2020 (view towards the north-east).



Fig. 26. Construction of a retaining wall made of steel sheet piles – band embankment within the artery of Zarzekowice Street, status in the first decade of September 2020 (view towards the south-west).



Fig. 27. Construction of a reinforced concrete retaining wall – band embankment within the artery of Mostowa Street, status in the second decade of September 2020 (view towards the north-east).



Fig. 28. Construction of a reinforced concrete retaining wall – band embankment between Zarzekowice Street and the right embankment of Vistula, status in the third decade of June 2020 (view towards the south-west).



Fig. 29. Protection against birds crashing against the glass
– band embankment within the artery of Mostowa Street,
status in the third decade of September 2022 (view towards the south-west).



Fig. 30. Protection against birds crashing against the glass
– band embankment within the artery of Zarzekowice Street,
status in the third decade of October 2022 (view towards the north-east).



Fig. 31. Shaping the slopes of the flood embankment
– band embankment between Zarzekowice Street and the right embankment of Vistula, status in the second decade of September 2020 (view towards the south-west).



Fig. 32. Shaping the slopes of the flood embankment
– right-bank Vistula embankment along the bank of the port channel, status in the third decade of March 2020 (view towards the north-east).



Fig. 33. Compaction of the body of the flood embankment
– band embankment between Zarzekowice Street and the right embankment of Vistula, status in the third decade of April 2021 (view towards the north-east).



Fig. 34. Securing the slope of the flood embankment with a net against beavers
– right-bank Vistula embankment along the bank of the port channel, status in the second decade of May 2021 (view towards the north-east).



Fig. 35. Covering slopes of the flood embankment with a top-soil layer – band embankment between Zarzekowice Street and the right embankment of Vistula, status in the second decade of July 2021 (view towards the south-west).



Fig. 36. Covering slopes of the flood embankment with a top-soil layer – right-bank Vistula embankment along the bank of the port channel, status in the first decade of July 2021 (view towards the north-east).



Fig. 37. Construction of a road on the band embankment
– band embankment within the artery of Mostowa Street,
status in the first decade of April 2022 (view towards the north-east).

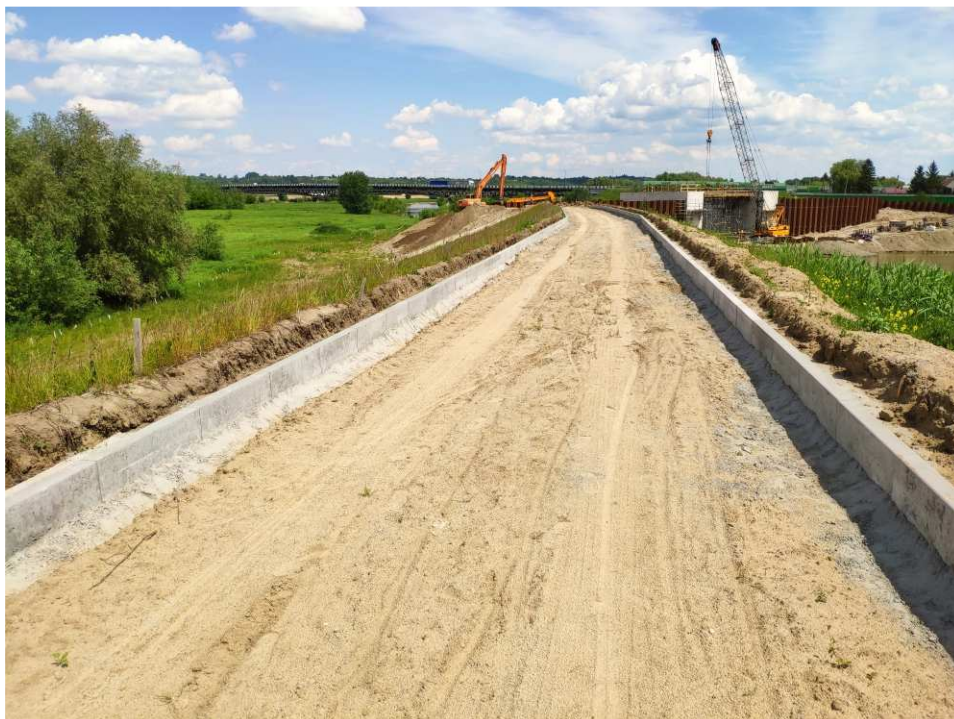


Fig. 38. Construction of a road on the crown of the flood embankment
– right-bank Vistula embankment along the bank of the port channel,
status in the third decade of May 2022 (view towards the north-east).



Fig. 39. Growth of grasses sown on the slope of the flood embankment
– band embankment between Zarzekowice Street and the right embankment
of Vistula, status in the third decade of July 2022 (view towards the south-west).



Fig. 40. Growth of grasses sown on the slope of the flood embankment
– right-bank Vistula embankment along the bank of the port channel,
status in the first decade of May 2022 (view towards the south-west).



Fig. 41. Flooding from Vistula in the area of works
– band embankment within the artery of Mostowa Street,
status in the third decade of June 2020 (view towards the south-west).



Fig. 42. Flooding from Vistula in the area of works
– right-bank Vistula embankment along the bank of the port channel,
status in the third decade of June 2020 (view towards the south-west).



Fig. 43. Construction of a flood gate on the port channel in Sandomierz, status in the third decade of April 2022 (view towards the south-east).



Fig. 44. Construction of a flood gate on the port channel in Sandomierz, status in the first decade of July 2022 (view towards the north-west).



Fig. 45. Works in a bed of the port channel carried out under the cover of sheet piling – flood gate on the port channel in Sandomierz, status in the third decade of October 2021 (view towards the south-east).



Fig. 46. Works in a bed of the port channel carried out under the cover of sheet piling – flood gate on the port channel in Sandomierz, status in the third decade of May 2022 (view towards the north-west).



Fig. 47. No impact on water environment beyond the boundaries of the works site – flood gate on the port channel in Sandomierz, status in the first decade of August 2022 (view towards the south-east).



Fig. 48. No impact on Natura 2000 site beyond the boundaries of the works site – flood gate on the port channel in Sandomierz, status in the first decade of July 2022 (view towards the north-east).



Fig. 49. Site condition in the last quarter of the works implementation period on Task 3 – flood gate on the port channel in Sandomierz, status in the third decade of December 2022 (view towards the west).



Fig. 50. Site condition in the last quarter of the works implementation period on Task 3 – band embankment within the artery of Mostowa Street, status in the third decade of November 2022 (view towards the north-east).



Fig. 51. Site condition in the last quarter of the works implementation period on Task 3 – band embankment within the artery of Mostowa Street, status in the third decade of December 2022 (view towards the north-east).



Fig. 52. Site condition in the last quarter of the works implementation period on Task 3 – band embankment within the artery of Portowa Street, status in the third decade of December 2022 (view towards the south-west).



Fig. 53. Site condition in the last quarter of the works implementation period on Task 3 – band embankment within the artery of Zarzekowice Street, status in the third decade of December 2022 (view towards the north-east).



Fig. 54. Site condition in the last quarter of the works implementation period on Task 3 – band embankment between Zarzekowice Street and the right embankment of Vistula, status in the third decade of December 2022 (view towards the south-west).



Fig. 55. Site condition in the last quarter of the works implementation period on Task 3 – band embankment between Zarzekowice Street and the right embankment of Vistula, status in the third decade of December 2022 (view towards the north-east).



Fig. 56. Site condition in the last quarter of the works implementation period on Task 3 – right-bank Vistula embankment along the bank of the port channel, status in the third decade of December 2022 (view towards the north-east).