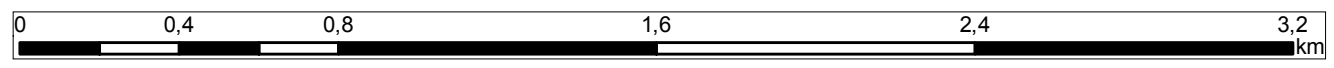


Appendix no. 9 Map with location of the Works Contract's elements

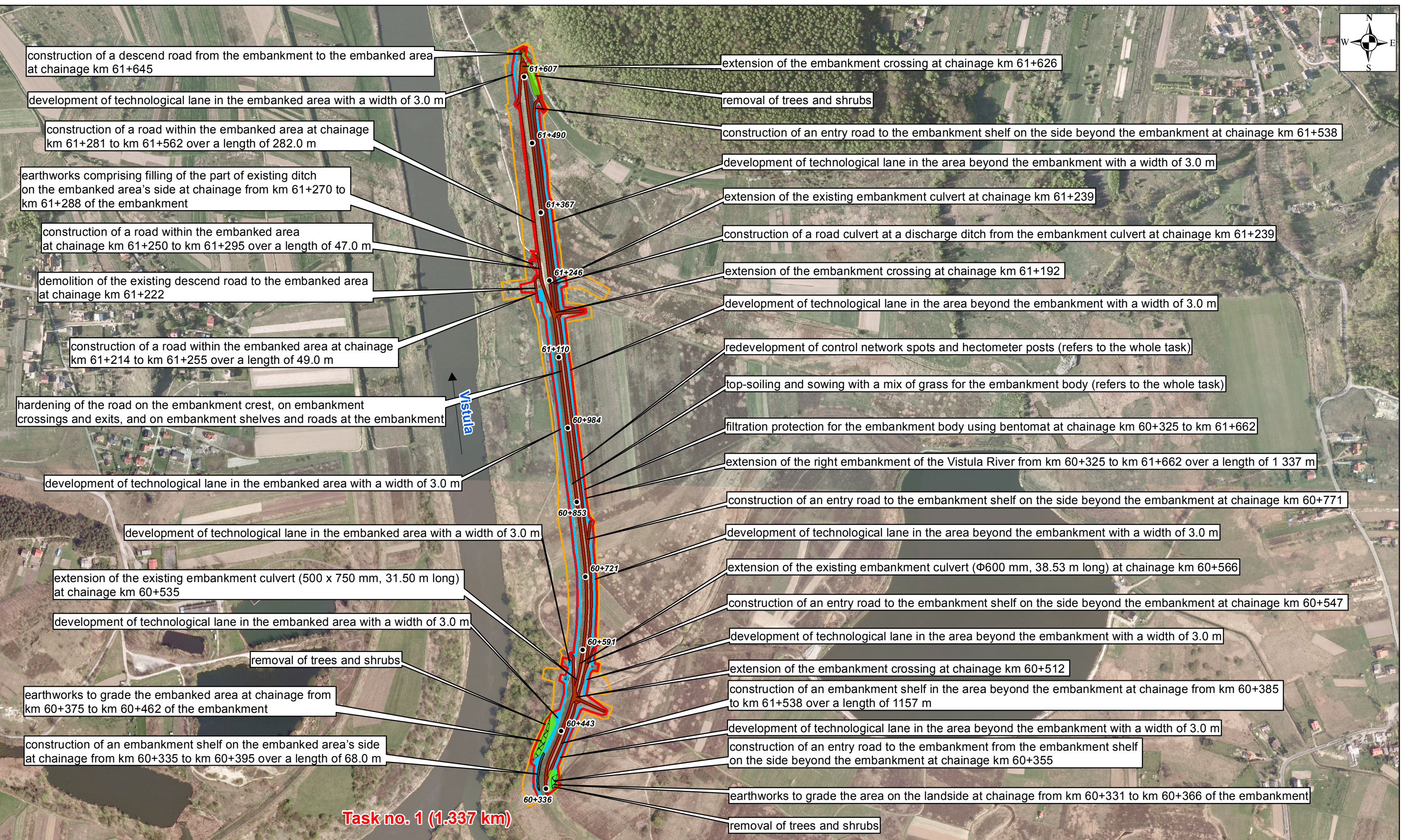
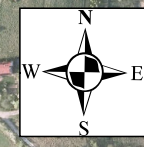
Legend

- Designed project area
- Area of investment nuisance (the scope of the application for a decision on environmental conditions)



INDEX OF SHEETS

3A.3 Section 4 – Right embankment of Vistula river from estuary of Skawinka river to Kościuszko barrage
 Task No. 1: km 60+325 to km 61+662
 Task No. 2: km 62+017 to km 63+183
 Task No. 3: km 63+779 to km 65+160



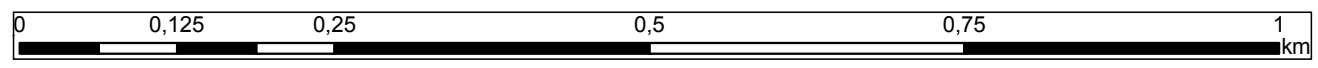
Task no. 1 (1.337 km)

Legend

- Designed project area
- Area of investment nuisance (the scope of the application for a decision on environmental conditions)
- Reinforced-concrete wall
- Anti-filtration membrane

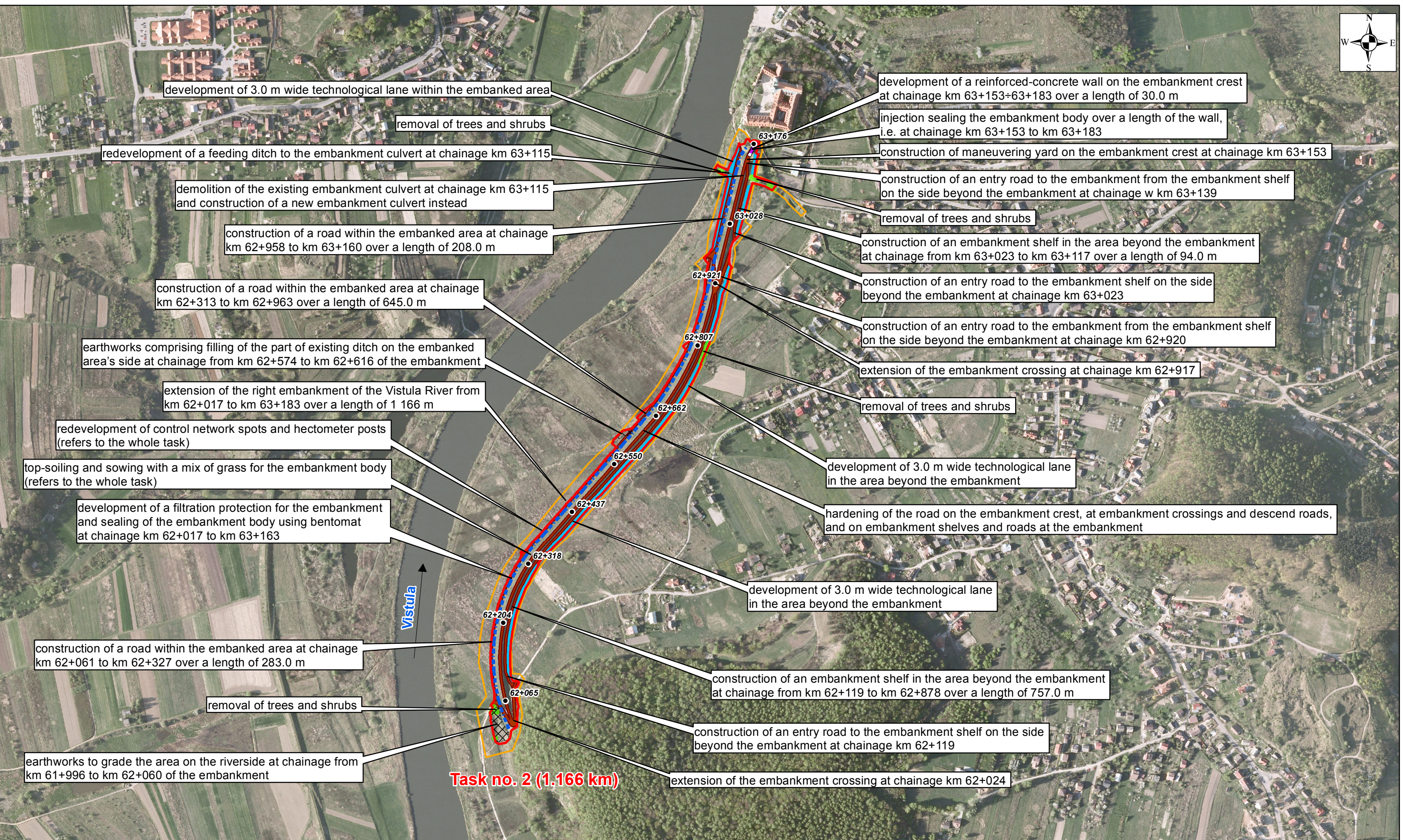
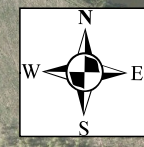
- Grading area within the embanked area and within the area beyond the embankment
- Removal of trees and shrubs
- Designed reinforcement of embankment crest, crossings and shelves (roads)
- Technological lane

Appendix no. 9 Map with location of the Works Contract's elements



3A.3 Section 4 – Right embankment of Vistula river from estuary of Skawinka river to Kościuszko barrage

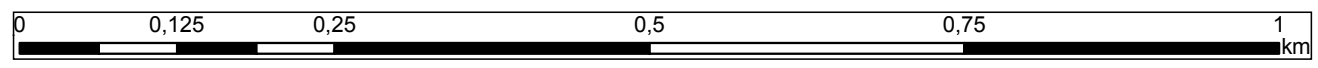
Task No. 1: km 60+325 to km 61+662
 Task No. 2: km 62+017 to km 63+183
 Task No. 3: km 63+779 to km 65+160



Legend

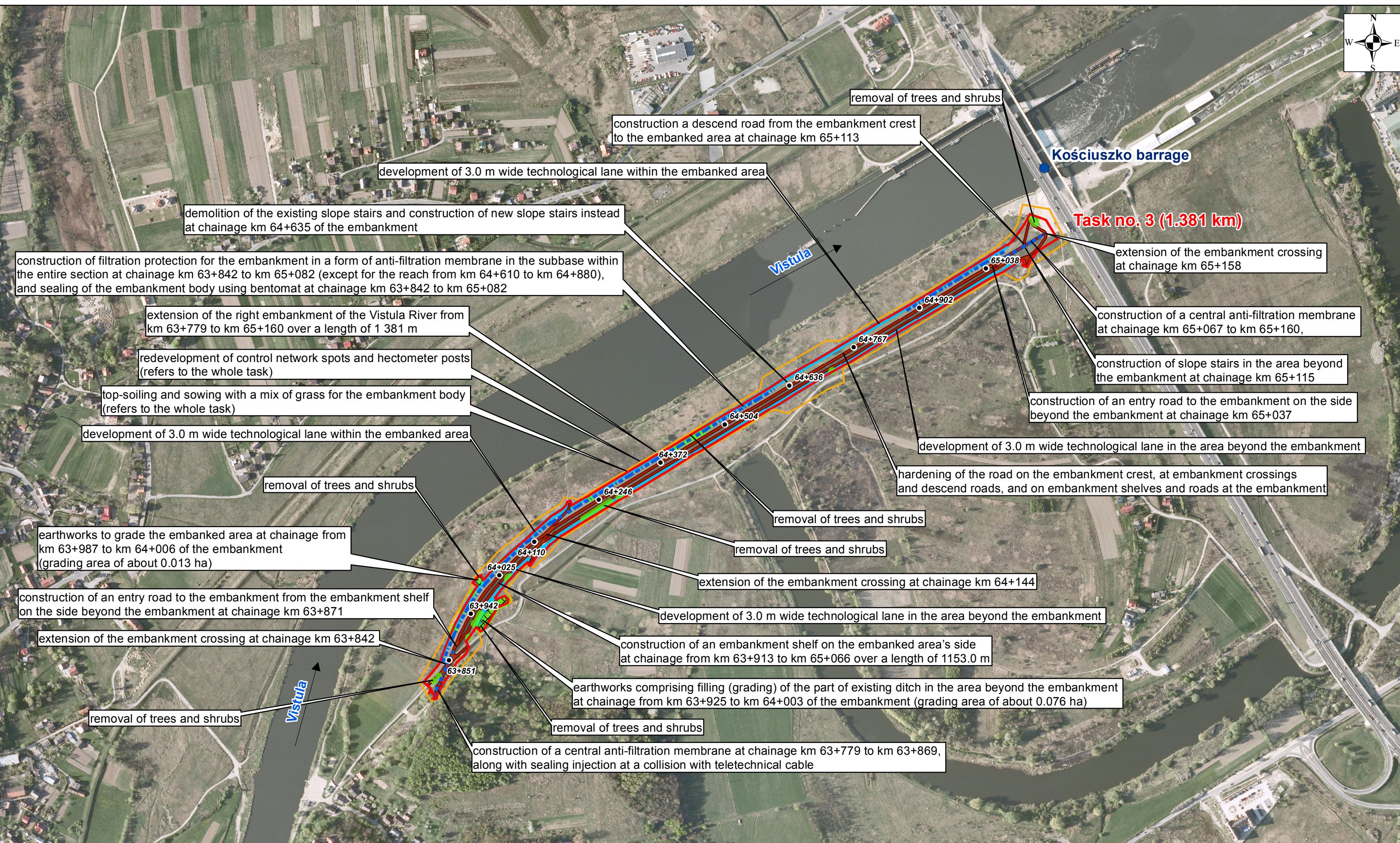
- Designed project area
- Area of investment nuisance (the scope of the application for a decision on environmental conditions)
- Reinforced-concrete wall
- Anti-filtration membrane

- Grading area within the embanked area and within the area beyond the embankment
- Removal of trees and shrubs
- Designed reinforcement of embankment crest, crossings and shelves (roads)
- Technological lane



Appendix no. 9 Map with location of the Works Contract's elements

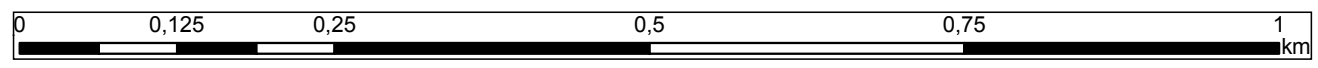
3A.3 Section 4 – Right embankment of Vistula river from estuary of Skawinka river to Kościuszko barrage
 Task No. 1: km 60+325 to km 61+662
 Task No. 2: km 62+017 to km 63+183
 Task No. 3: km 63+779 to km 65+160



Legend

- Designed project area
- Area of investment nuisance (the scope of the application for a decision on environmental conditions)
- Reinforced-concrete wall
- Anti-filtration membrane

- Grading area within the embanked area and within the area beyond the embankment
- Removal of trees and shrubs
- Designed reinforcement of embankment crest, crossings and shelves (roads)
- Technological lane



Appendix no. 9 Map with location of the Works Contract's elements

SHEET 3

3A.3 Section 4– Right embankment of Vistula river from estuary of Skawinka river to Kościuszko barrage

Task No. 1: km 60+325 to km 61+662

Task No. 2: km 62+017 to km 63+183

Task No. 3: km 63+779 to km 65+160