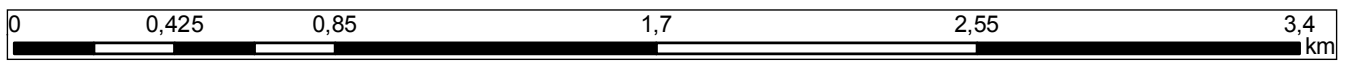


- Legend**
- Potential flood risk areas
  - Task no. 1
  - Task no. 2
  - Task no. 3
  - Areas excluded from potential flood risk

**APPENDIX NO. 8 MAP WITH LOCATION OF THE WORKS CONTRACT IN REFERENCE TO AREAS EXCLUDED FROM LAND OF POTENTIAL FLOOD HAZARD**  
 (The map does not present the remaining embankments of the Vistula River, for which sections 1, 2 and 3 – being the subject of the study – form a completion of the Cracow's flood protection system)



**INDEX OF SHEETS**






3A.3 Sektion 4 - Right embankment of the Vistula from the Skawinka estuary to the Kościuszko barrage  
 Task No. 1: from km 60+325 to km 61+662  
 Task No. 2: from km 62+017 to km 63+183  
 Task No. 3: from km 63+779 to km 65+160

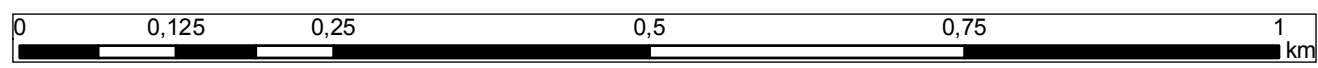




**APPENDIX NO. 8 MAP WITH LOCATION OF THE WORKS CONTRACT IN REFERENCE TO AREAS EXCLUDED FROM LAND OF POTENTIAL FLOOD HAZARD**

(The map does not present the remaining embankments of the Vistula River, for which sections 1, 2 and 3 – being the subject of the study – form a completion of the Cracow's flood protection system)

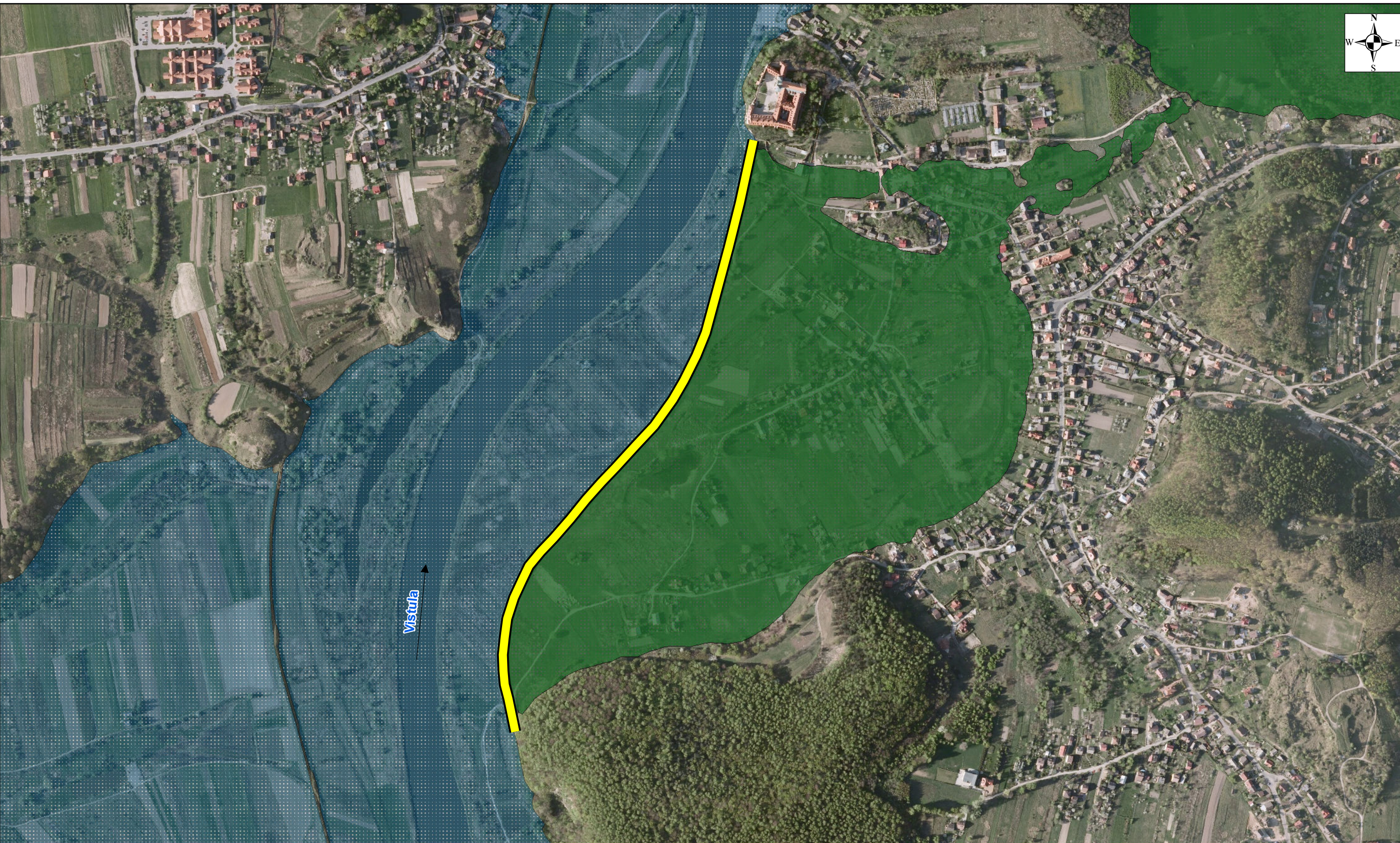
- Legend**
-  Potential flood risk areas
  -  Task no. 1
  -  Areas excluded from potential flood risk
  -  Task no. 2
  -  Task no. 3



**SHEET 1**

**3A.3 Section 4 - Right embankment of the Vistula from the Skawinka estuary to the Kościuszko barrage**  
Task No. 1: from km 60+325 to km 61+662  
Task No. 2: from km 62+017 to km 63+183  
Task No. 3: from km 63+779 to km 65+160

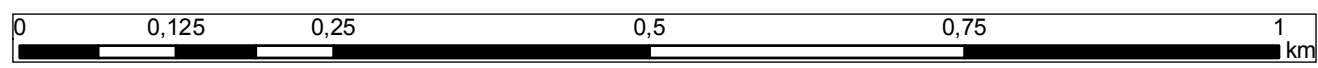




**APPENDIX NO. 8 MAP WITH LOCATION OF THE WORKS CONTRACT IN REFERENCE TO AREAS EXCLUDED FROM LAND OF POTENTIAL FLOOD HAZARD**

(The map does not present the remaining embankments of the Vistula River, for which sections 1, 2 and 3 – being the subject of the study – form a completion of the Cracow's flood protection system)

- Legend**
- Designed project area
  - Potential flood risk areas
  - Task no. 1
  - Task no. 2
  - Task no. 3
  - Areas excluded from potential flood risk



**SHEET 2**

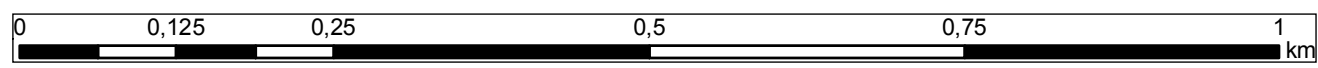
**3A.3 Section 4 - Right embankment of the Vistula from the Skawinka estuary to the Kościuszko barrage**  
 Task No. 1: from km 60+325 to km 61+662  
 Task No. 2: from km 62+017 to km 63+183  
 Task No. 3: from km 63+779 to km 65+160





**Legend**

- Designed project area
- Task no. 1
- Task no. 2
- Task no. 3
- Potential flood risk areas
- Areas excluded from potential flood risk



**APPENDIX NO. 8 MAP WITH LOCATION OF THE WORKS CONTRACT IN REFERENCE TO AREAS EXCLUDED FROM LAND OF POTENTIAL FLOOD HAZARD**  
(The map does not present the remaining embankments of the Vistula River, for which sections 1, 2 and 3 – being the subject of the study – form a completion of the Cracow's flood protection system)

**SHEET 3**

**3A.3 Section 4 - Right embankment of the Vistula from the Skawinka estuary to the Kościuszko barrage**  
Task No. 1: from km 60+325 to km 61+662  
Task No. 2: from km 62+017 to km 63+183  
Task No. 3: from km 63+779 to km 65+160