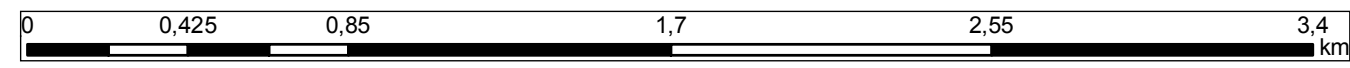


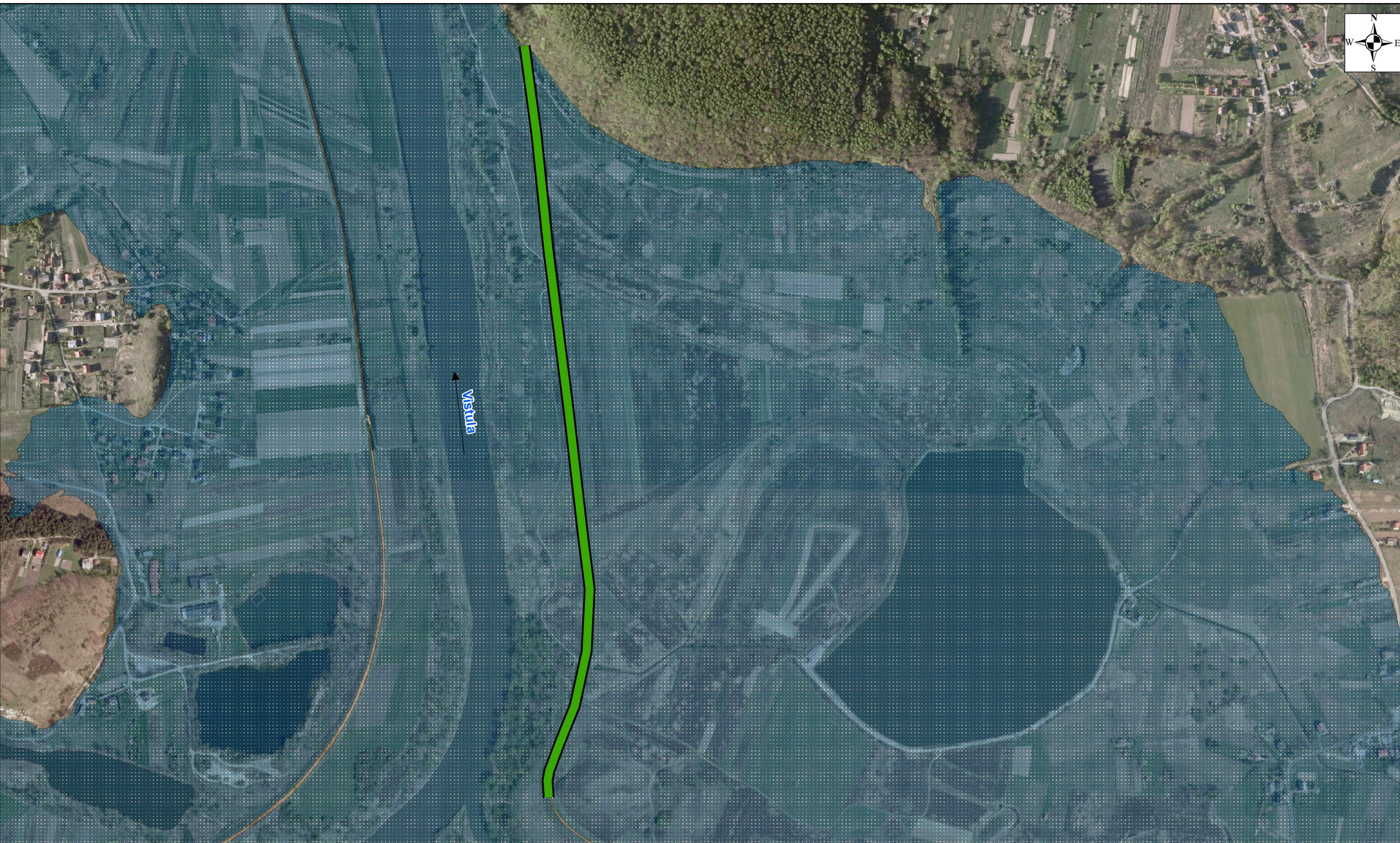
- Legend**
- Task no. 1
 - Task no. 2
 - Task no. 3
 - Potential flood risk areas



APPENDIX NO. 7 MAP WITH LOCATION OF THE WORKS CONTRACT IN REFERENCE TO AREAS OF POTENTIAL FLOOD HAZARD
 (The map does not present the remaining embankments of the Vistula River, for which sections 1, 2 and 3 – being the subject of the study – form a completion of the Cracow's flood protection system)

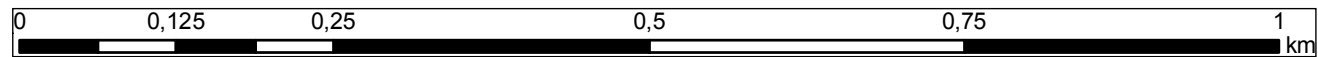
INDEX OF SHEETS

3A.3 Section 4 - Right embankment of the Vistula from the Skawinka estuary to the Kościuszko barrage
 Task No. 1: from km 60+325 to km 61+662
 Task No. 2: from km 62+017 to km 63+183
 Task No. 3: from km 63+779 to km 65+160



Legend

- Designed project area**
- Task no. 1
 - Task no. 2
 - Task no. 3
 - Potential flood risk areas



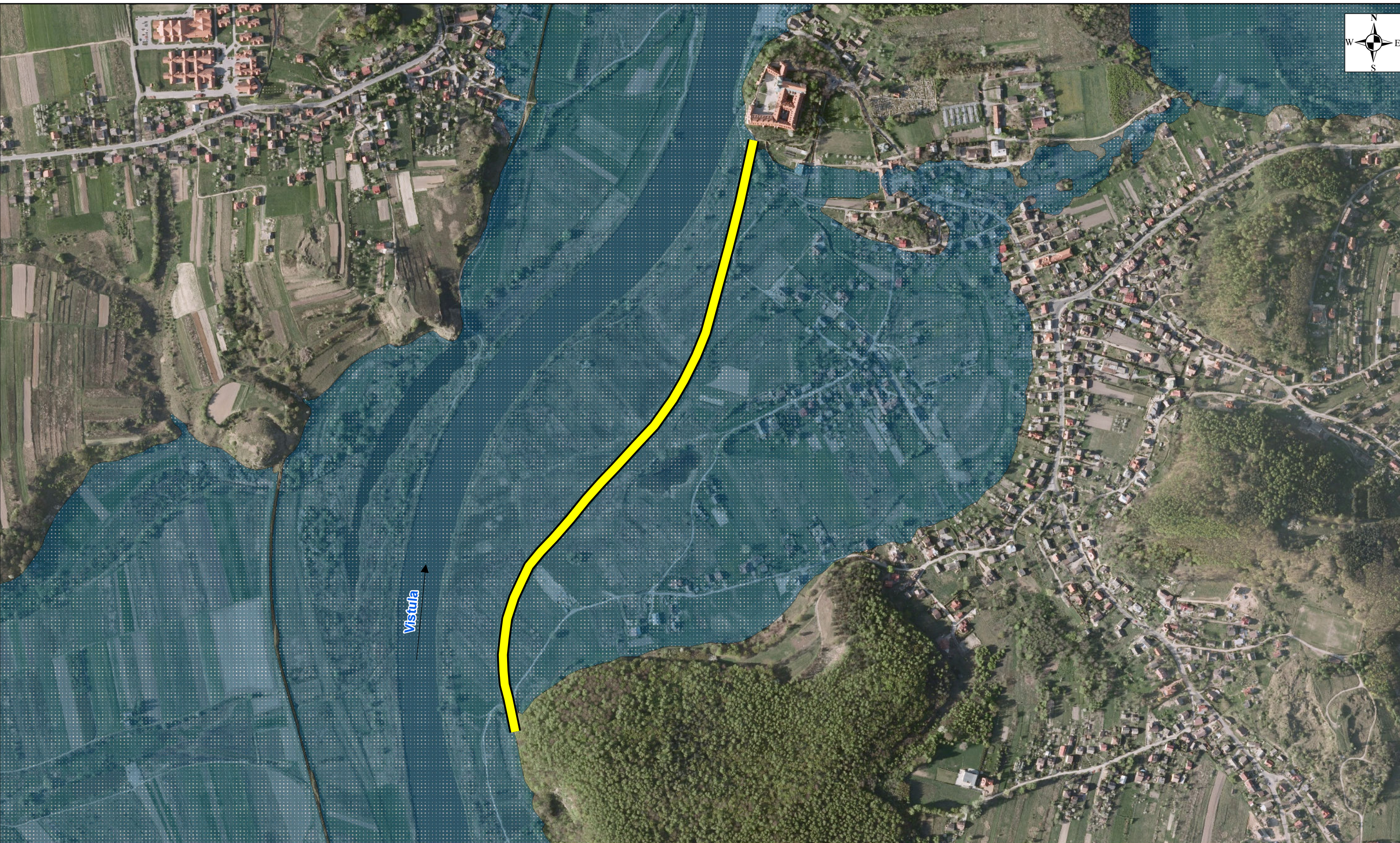
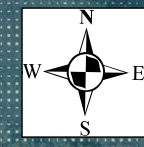
APPENDIX NO. 7 MAP WITH LOCATION OF THE WORKS CONTRACT IN REFERENCE TO AREAS OF POTENTIAL FLOOD HAZARD

(The map does not present the remaining embankments of the Vistula River, for which sections 1, 2 and 3 – being the subject of the study – form a completion of the Cracow's flood protection system)

SHEET 1

3A.3 Section 4 - Right embankment of the Vistula from the Skawinka estuary to the Kościuszko barrage

- Task No. 1: from km 60+325 to km 61+662
- Task No. 2: from km 62+017 to km 63+183
- Task No. 3: from km 63+779 to km 65+160

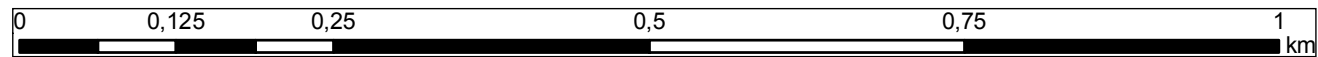


Legend

Designed project area

- Task no. 1
- Task no. 2
- Task no. 3

Potential flood risk areas



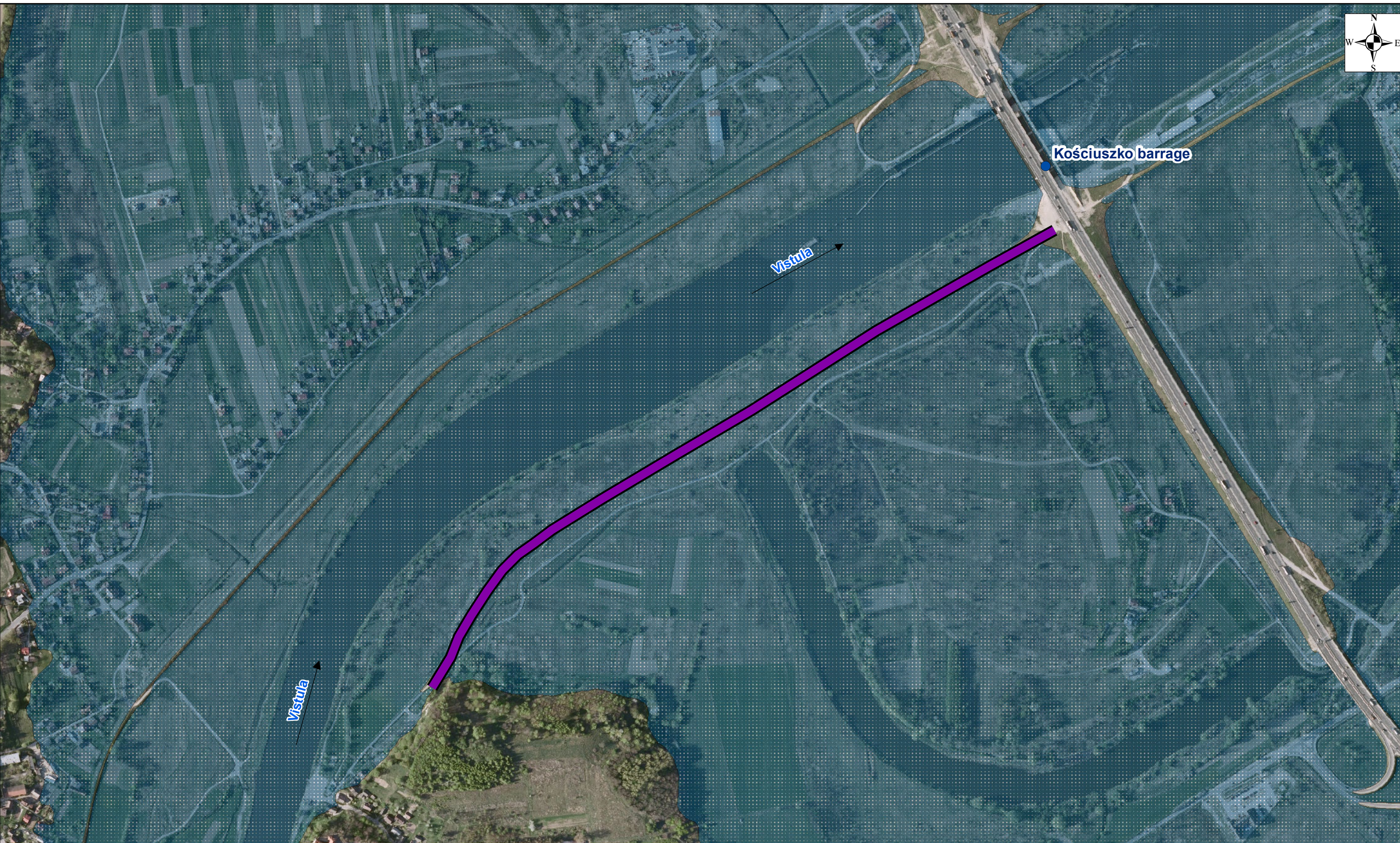
APPENDIX NO. 7 MAP WITH LOCATION OF THE WORKS CONTRACT IN REFERENCE TO AREAS OF POTENTIAL FLOOD HAZARD

(The map does not present the remaining embankments of the Vistula River, for which sections 1, 2 and 3 – being the subject of the study – form a completion of the Cracow's flood protection system)

SHEET 2

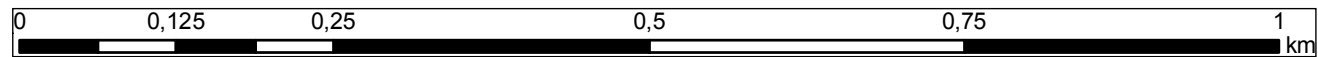
3A.3 Section 4 - Right embankment of the Vistula from the Skawinka estuary to the Kościuszko barrage

- Task No. 1: from km 60+325 to km 61+662
- Task No. 2: from km 62+017 to km 63+183
- Task No. 3: from km 63+779 to km 65+160



Legend

- Designed project area**
- Task no. 1
 - Task no. 2
 - Task no. 3
 - Potential flood risk areas



APPENDIX NO. 7 MAP WITH LOCATION OF THE WORKS CONTRACT IN REFERENCE TO AREAS OF POTENTIAL FLOOD HAZARD

(The map does not present the remaining embankments of the Vistula River, for which sections 1, 2 and 3 – being the subject of the study – form a completion of the Cracow's flood protection system)

SHEET 3

3A.3 Section 4 - Right embankment of the Vistula from the Skawinka estuary to the Kościuszko barrage

- Task No. 1: from km 60+325 to km 61+662
- Task No. 2: from km 62+017 to km 63+183
- Task No. 3: from km 63+779 to km 65+160