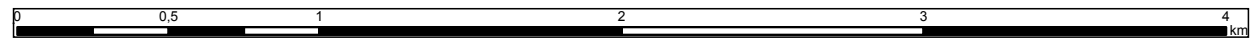


WORKS CONTRACT 3D.1 San Programme. Passive Protection in San basin

**APPENDIX NO. 9: LOCATION OF NATURAL HABITATS AND FAUNA IN THE CONTRACT AREA**

**INDEX OF SHEETS**





# Legenda

- Mileage of embankment
- — — Axis of embankment
- 100 m buffer zone
- Contract area boundary
- ▨ Fragments of habitats exposed to destruction as a result of the Contract

## Natural habitats (RDOŚ Rzeszów data)

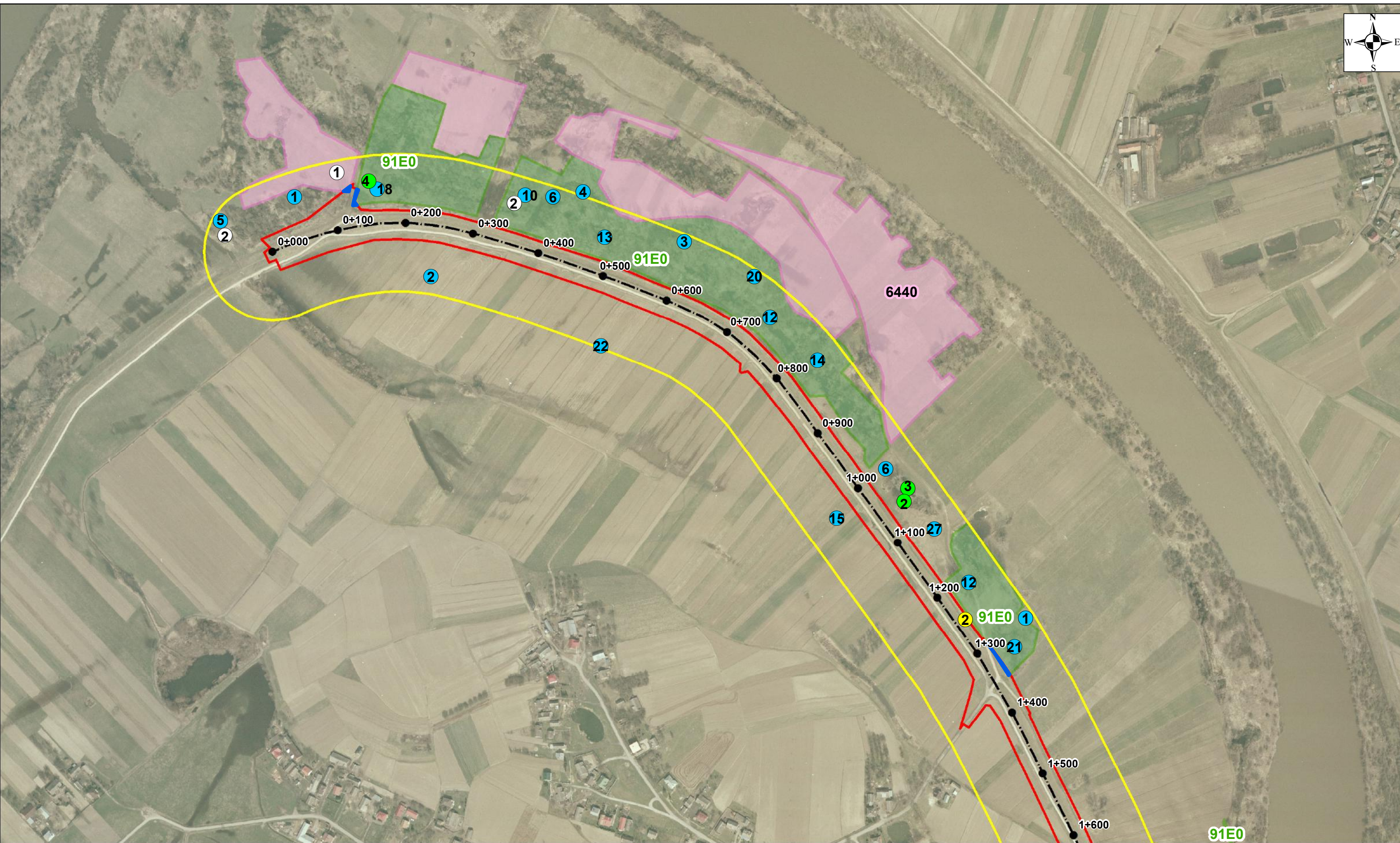
- 6440 / *Allium angulosum* stands
- 6510
- 91E0

## Fauna occurrence

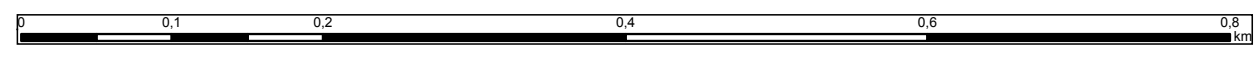
### division, number, name of species

- invertebrates, 1, *Bombus lapidarius*
- invertebrates, 2, *Bombus terrestris*
- invertebrates, 3, *Bombus lucorum*
- avifauna, 1, Common pheasant
- avifauna, 2, Northern lapwing
- avifauna, 3, Song thrush
- avifauna, 4, European green woodpecker
- avifauna, 5, European greenfinch
- avifauna, 6, Red-backed shrike
- avifauna, 7, Common wood pigeon
- avifauna, 8, Barn swallow
- avifauna, 9, Common blackbird
- avifauna, 10, Common raven
- avifauna, 11, European serin
- avifauna, 12, Fieldfare
- avifauna, 13, Willow warbler
- avifauna, 14, Common chiffchaff
- avifauna, 15, White wagtail
- avifauna, 16, Corn bunting
- avifauna, 17, Common kestrel
- avifauna, 18, Long-tailed tit
- avifauna, 19, Eurasian collared dove
- avifauna, 20, Great tit
- avifauna, 21, Eurasian blue tit
- avifauna, 22, Eurasian skylark
- avifauna, 23, Eurasian jay
- avifauna, 24, European goldfinch
- avifauna, 25, Common starling
- avifauna, 26, Yellowhammer
- avifauna, 27, Hooded crow
- avifauna, 28, House sparrow
- avifauna, 29, Eurasian tree sparrow
- avifauna, 30, Chaffinch
- amphibians and reptiles, 1, Common frog
- amphibians and reptiles, 3, Pool frog
- amphibians and reptiles, 2, Edible frog
- amphibians and reptiles, 4, *Anguis fragilis*
- mammals, 1, Mole
- mammals, 2, *Lutra*

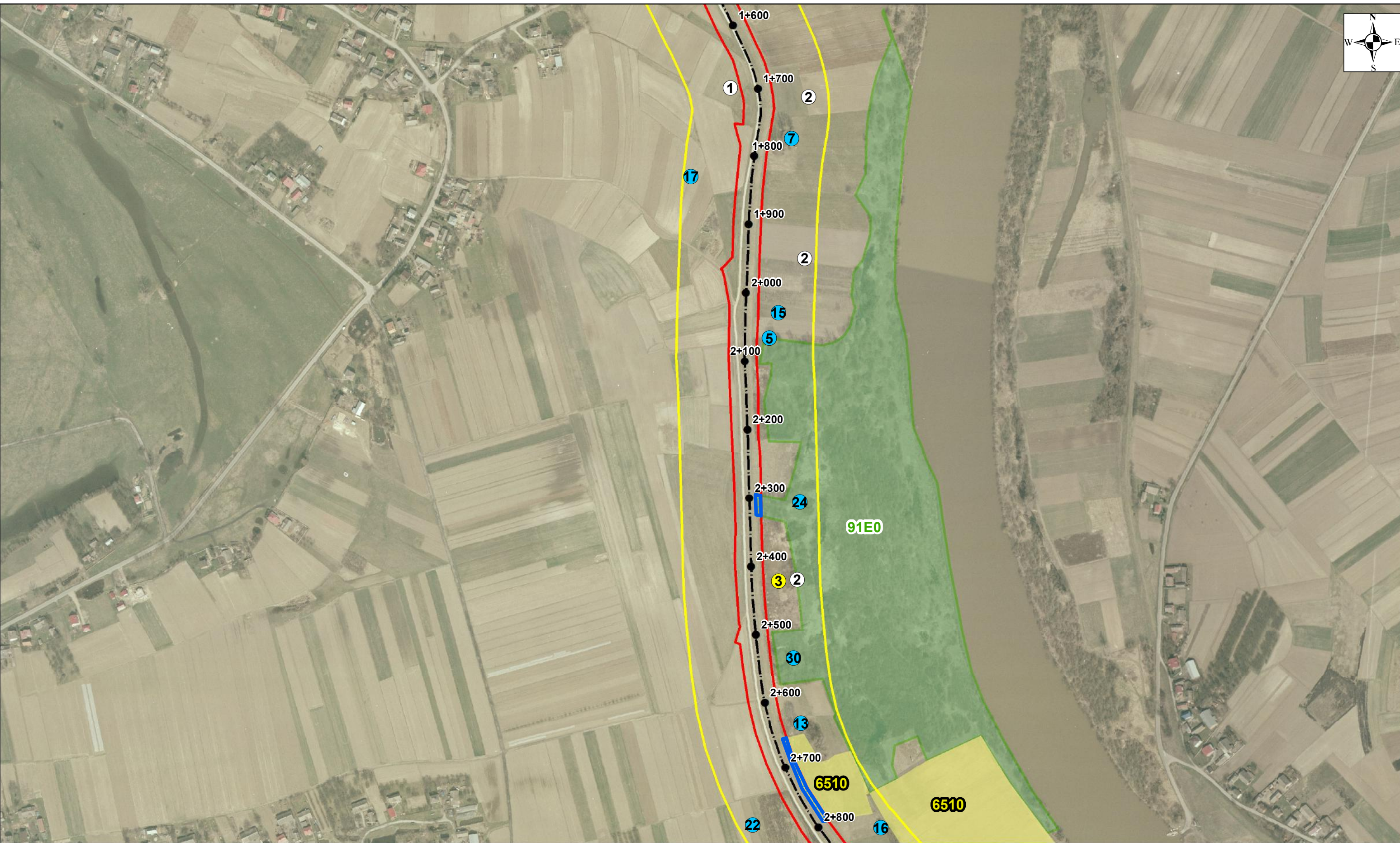




WORKS CONTRACT 3D.1 San Programme. Passive Protection in San basin  
APPENDIX NO. 9: LOCATION OF NATURAL HABITATS AND FAUNA IN THE CONTRACT AREA

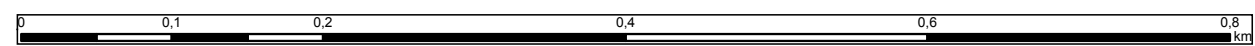






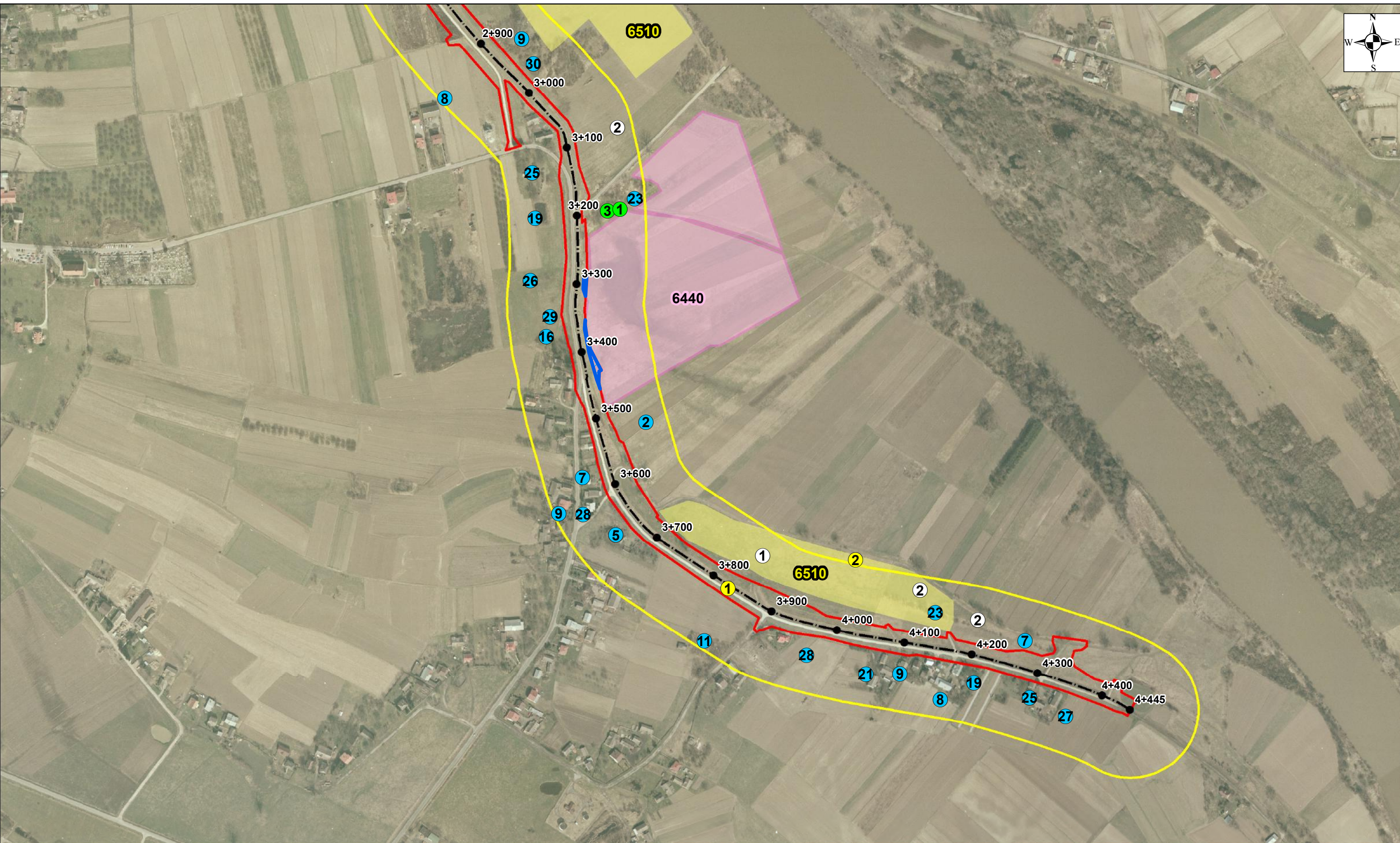
WORKS CONTRACT 3D.1 San Programme. Passive Protection in San basin

APPENDIX NO. 9: LOCATION OF NATURAL HABITATS AND FAUNA IN THE CONTRACT AREA



SHEET 2





WORKS CONTRACT 3D.1 San Programme. Passive Protection in San basin

APPENDIX NO. 9: LOCATION OF NATURAL HABITATS AND FAUNA IN THE CONTRACT AREA

