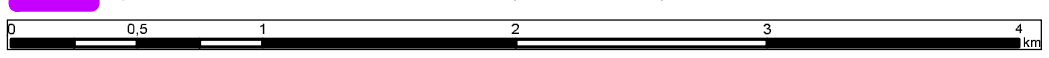


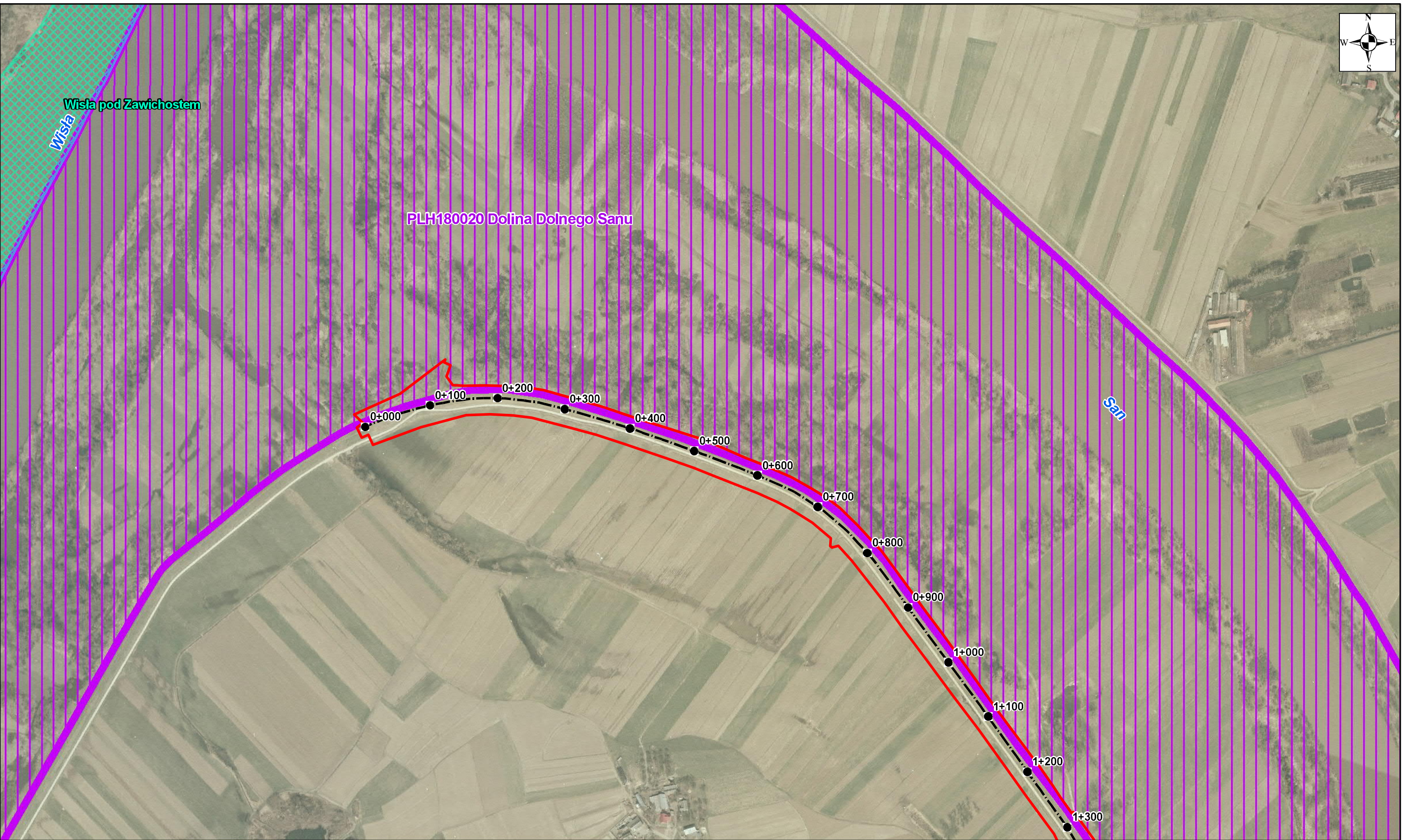
- Legend**
- Axis of embankment to be modernized
 - Nature reserve
 - Special Protection Area - SPA (Natura 2000)
 - Special Area of Conservation- SAC (Natura 2000)

WORKS CONTRACT 3D.1 San Programme. Passive Protection in San basin

APPENDIX NO. 6: LOCATION OF THE CONTRACT IN CONTEXT OF PROTECTED AREA AND NATURA 2000 NETWORK



INDEX OF SHEETS



PLH180020 Dolina Dolnego Sanu

Wisla pod Zawichostem

Wisla

San

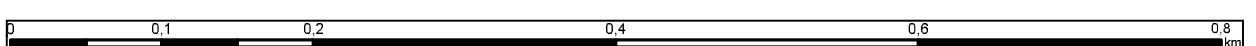
0+000 0+100 0+200 0+300 0+400 0+500 0+600 0+700 0+800 0+900 1+000 1+100 1+200 1+300

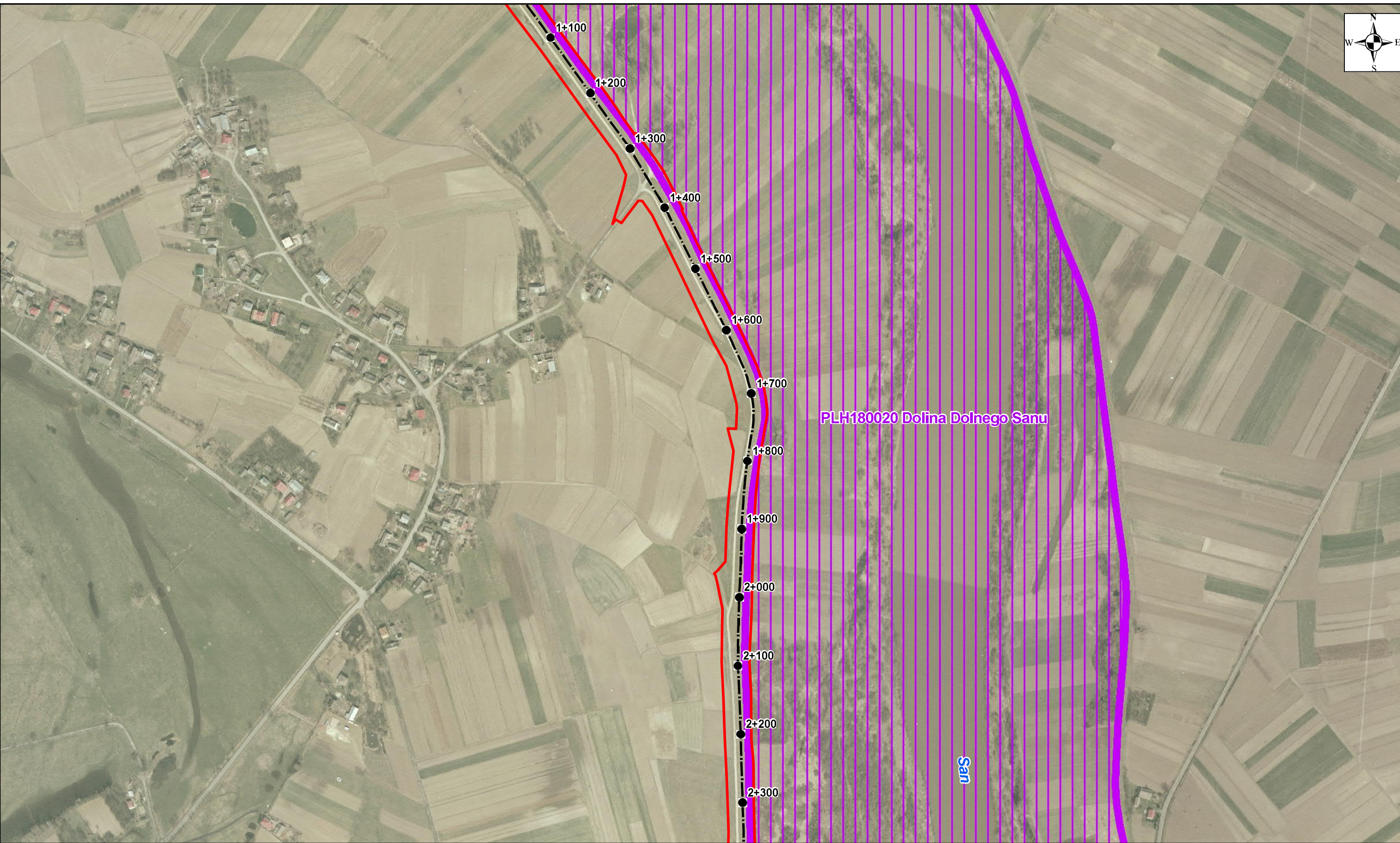
Legend

- Mileage of embankment
- Axis of embankment
- ▭ Contract area boundary
- ▨ Nature reserve
- ▭ Special Area of Conservation- SAC (Natura 2000)

WORKS CONTRACT 3D.1 San Programme. Passive Protection in San basin

APPENDIX NO. 6: LOCATION OF THE CONTRACT IN CONTEXT OF PROTECTED AREAS AND NATURA 2000 NETWORK



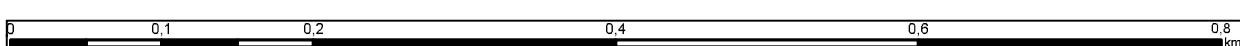


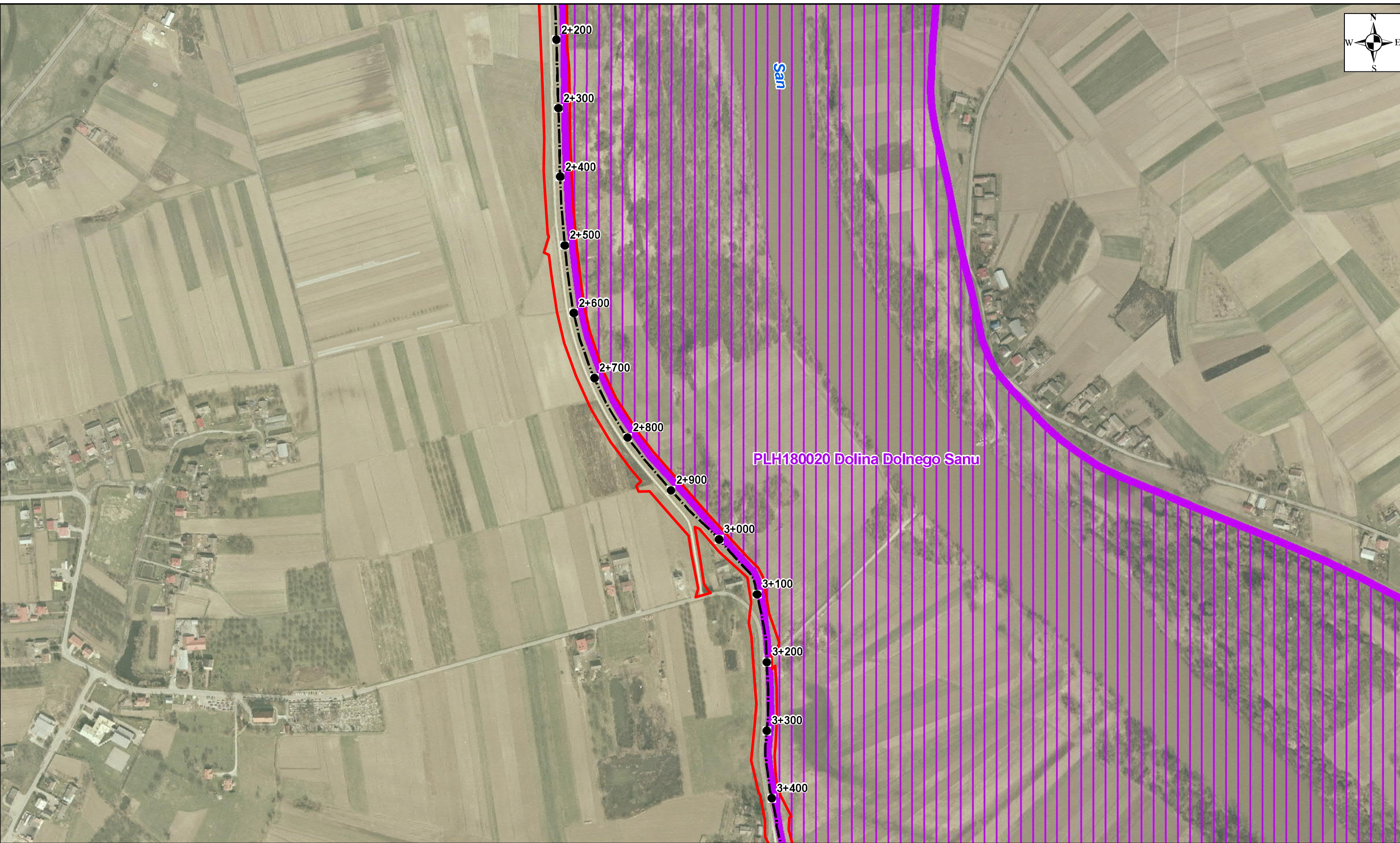
Legend

- Mileage of embankment
- Axis of embankment
- ▭ Contract area boundary
- ▨ Nature reserve
- ▭ Special Area of Conservation- SAC (Natura 2000)

WORKS CONTRACT 3D.1 San Programme. Passive Protection in San basin

APPENDIX NO. 6: LOCATION OF THE CONTRACT IN CONTEXT OF PROTECTED AREAS AND NATURA 2000 NETWORK



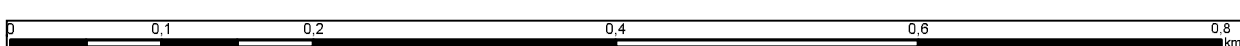


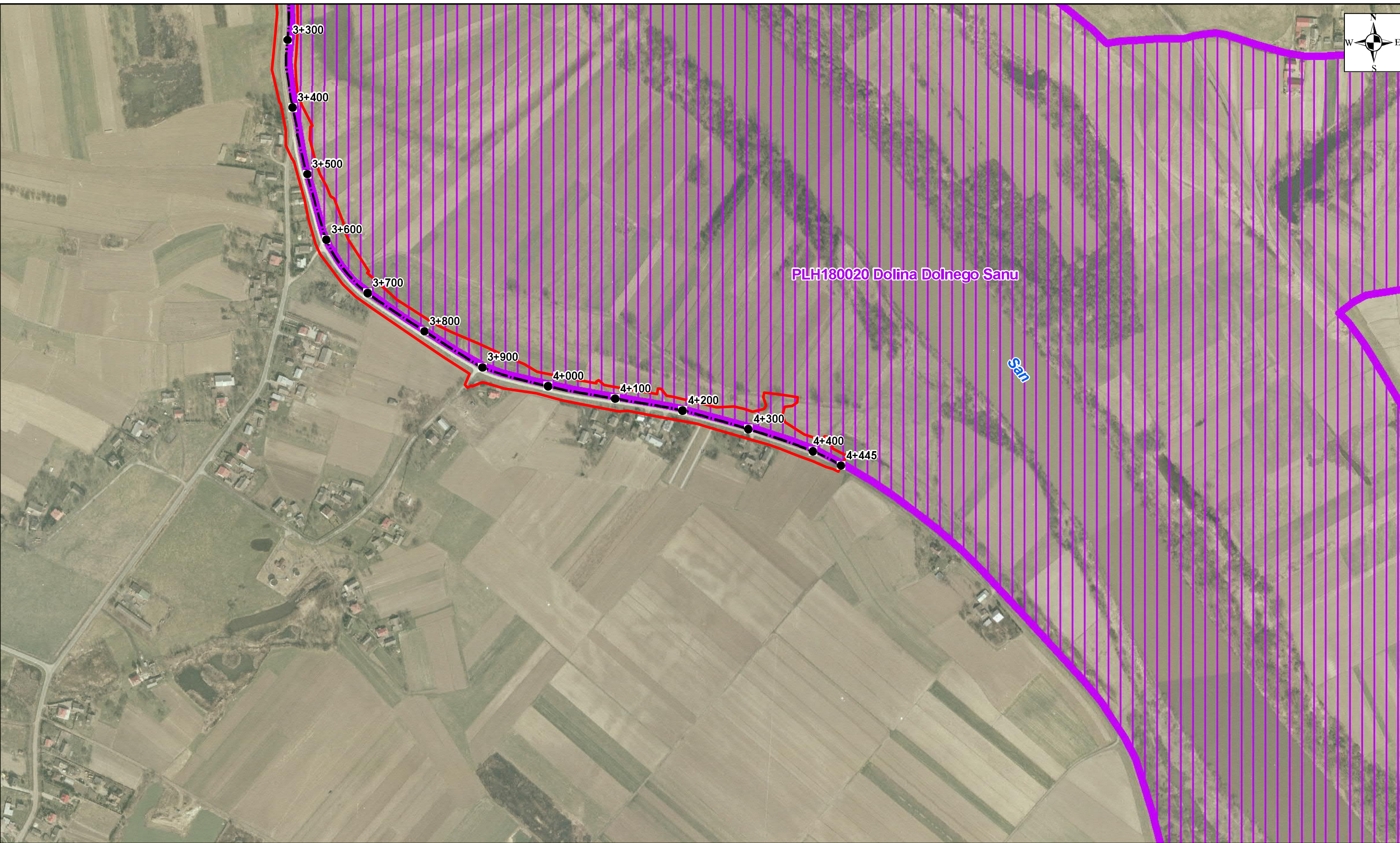
WORKS CONTRACT 3D.1 San Programme. Passive Protection in San basin

Legend

- Mileage of embankment
- Axis of embankment
- ▭ Contract area boundary
- ▨ Nature reserve
- ▭ Special Area of Conservation- SAC (Natura 2000)

APPENDIX NO. 6: LOCATION OF THE CONTRACT IN CONTEXT OF PROTECTED AREAS AND NATURA 2000 NETWORK





PLH180020 Dolina Dolnego Sanu

San

Legend

- Mileage of embankment
- Axis of embankment
- ▭ Contract area boundary
- ▨ Nature reserve
- ▨ Special Area of Conservation- SAC (Natura 2000)

WORKS CONTRACT 3D.1 San Programme. Passive Protection in San basin

APPENDIX NO. 6: LOCATION OF THE CONTRACT IN CONTEXT OF PROTECTED AREAS AND NATURA 2000 NETWORK

