

**Legend**

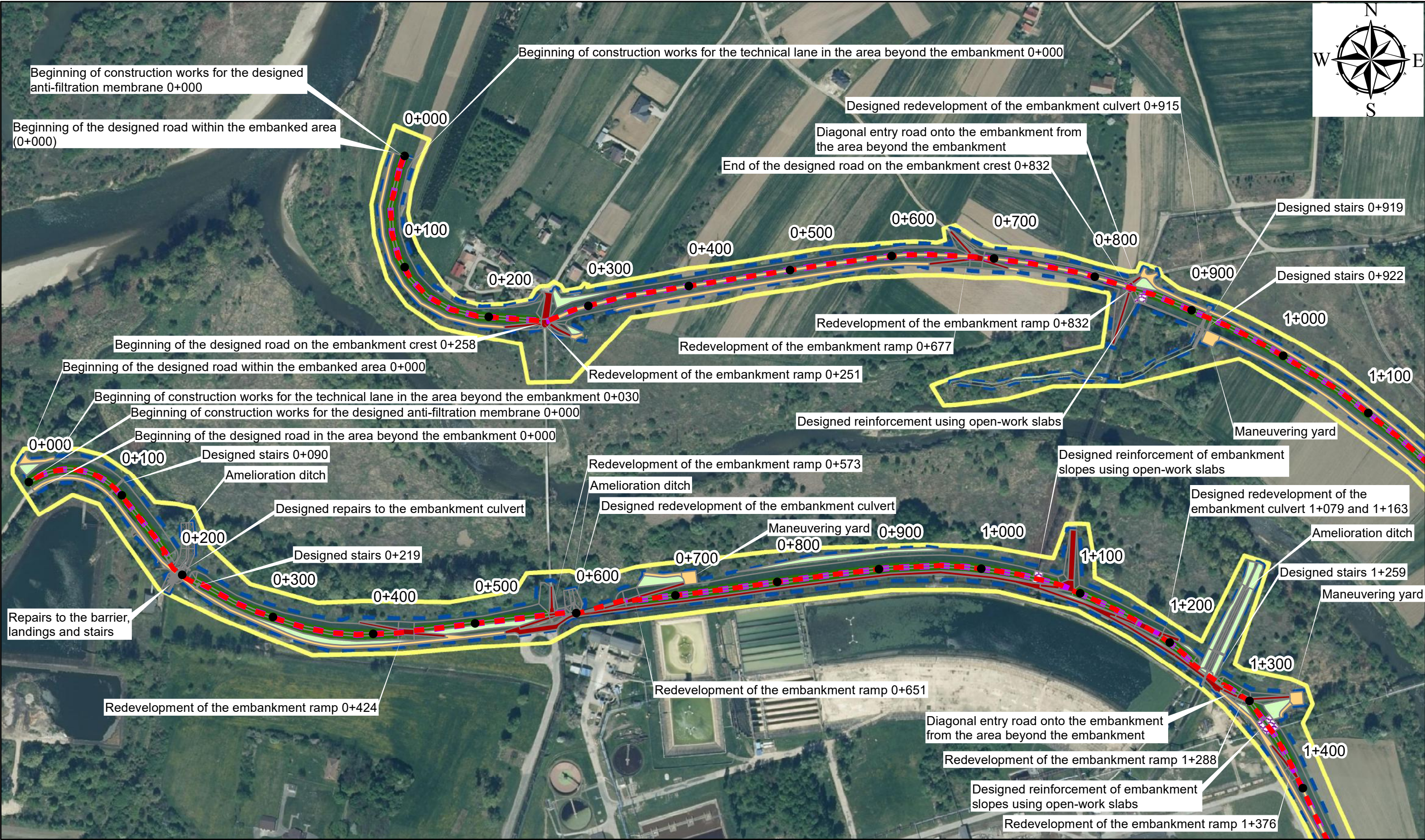
- - - Axis of embankment
- Contract 3D.2/1
- Scope of decisions on environmental conditions

Appendix No. 10: Map with location of elements of the Contract

**INDEX OF SHEETS**

SHEET 1	SHEET 4
SHEET 2	SHEET 5
SHEET 3	SHEET 6





● Mileage of embankment

— Axis of the embankment

— Design embankment

▨ Completing the losses of existing concrete

■ Hardening with crushed stone

■ Anti-filtration membrane

▨ Strengthening with grasscrete

■ Leveling of land - sowing grass

■ Securing the slope with a geogrid

■ Hardening with concrete slabs

■ Designed sowing grass

— Investment boundary

— Environmental Conditions

Appendix No. 10: Map with location of elements of the Contract

SHEET 1

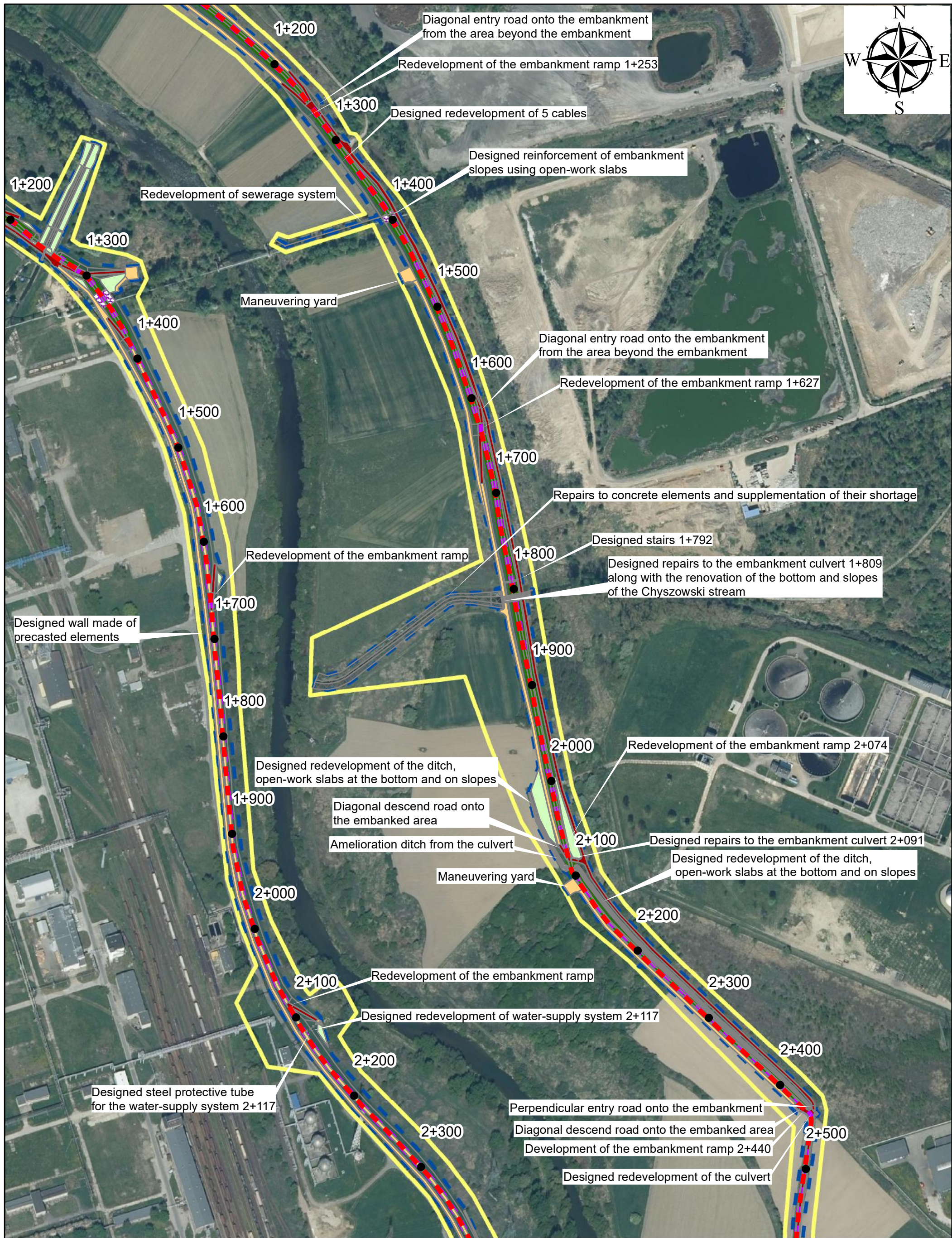
3D.2/2 Expansion of the left and right embankment of the Biala River in the Tarnow Municipality and the City of Tarnow

0

0,1

0,2 km





**Legend**

- Mileage of the embankment
- Axis of the embankment
- Designed embankment
- ▨ Completing the losses of existing concrete
- Hardening with crushed stone
- Anti-filtration membrane
- ▨ Strengthening with grasscrete
- Leveling of land - sowing grass
- Securing the slope with a geogrid
- Hardening with concrete slabs
- Designed sowing grass
- Investment boundary
- Environmental Conditions

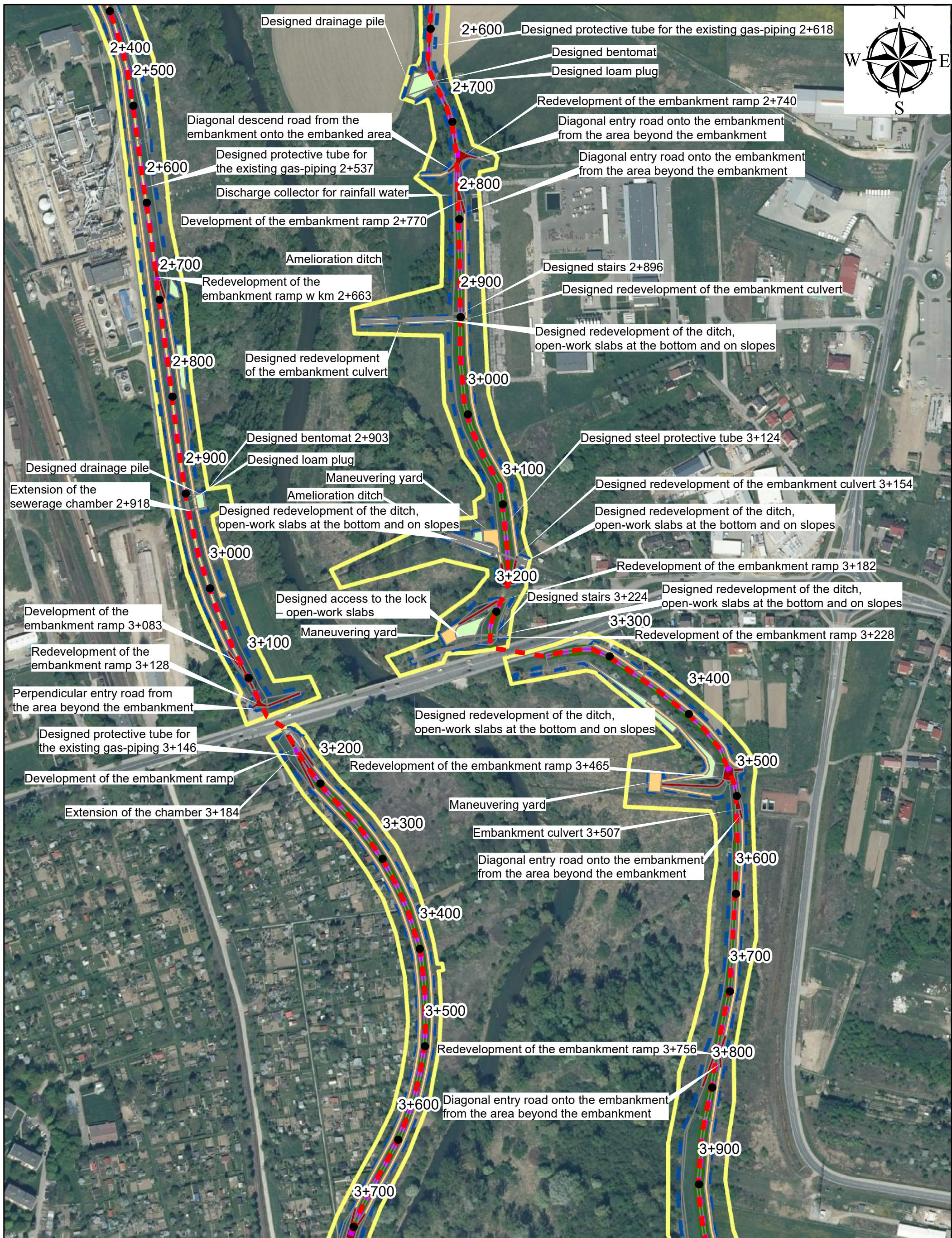
**Appendix No. 10: Map with location of elements of the Contract**

**SHEET 2**

0 0,1 0,2 km

3D.2/2 Expansion of the left and right embankment of the Biala River  
in the Tarnow Municipality and the City of Tarnow





## Legend

- Mileage of the embankment
- Axis of the embankment
- Designed embankment
- ▨ Completing the losses of existing concrete
- Hardening with crushed stone

- Anti-filtration membrane
- ▨ Strengthening with grasscrete
- Leveling of land - sowing grass
- Securing the slope with a geogrid

- Hardening with concrete slabs
- Designed sowing grass
- Investment boundary
- Environmental Conditions

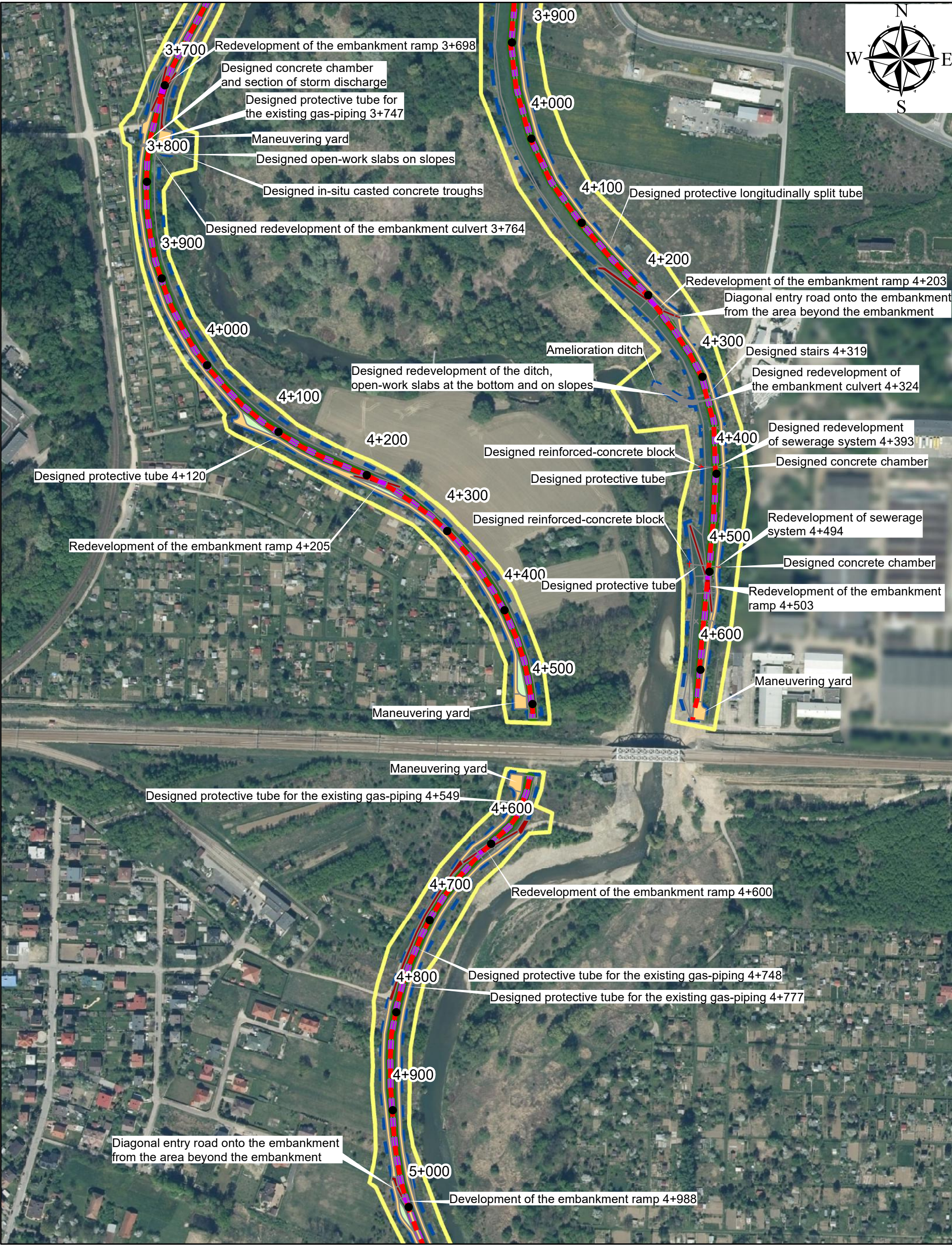
0 0,1 0,2 km

## Appendix No. 10: Map with location of elements of the Contract

**SHEET 3**

3D.2/2 Expansion of the left and right embankment of the Biala River  
in the Tarnow Municipality and the City of Tarnow





**Legend**

- Mileage of the embankment
- Axis of the embankment
- Designed embankment
- ▨ Completing the losses of existing concrete
- Hardening with crushed stone
- Anti-filtration membrane
- ▨ Strengthening with grasscrete
- Leveling of land - sowing grass
- Securing the slope with a geogrid
- Hardening with concrete slabs
- Designed sowing grass
- Investment boundary
- Environmental Conditions

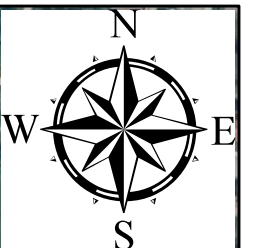
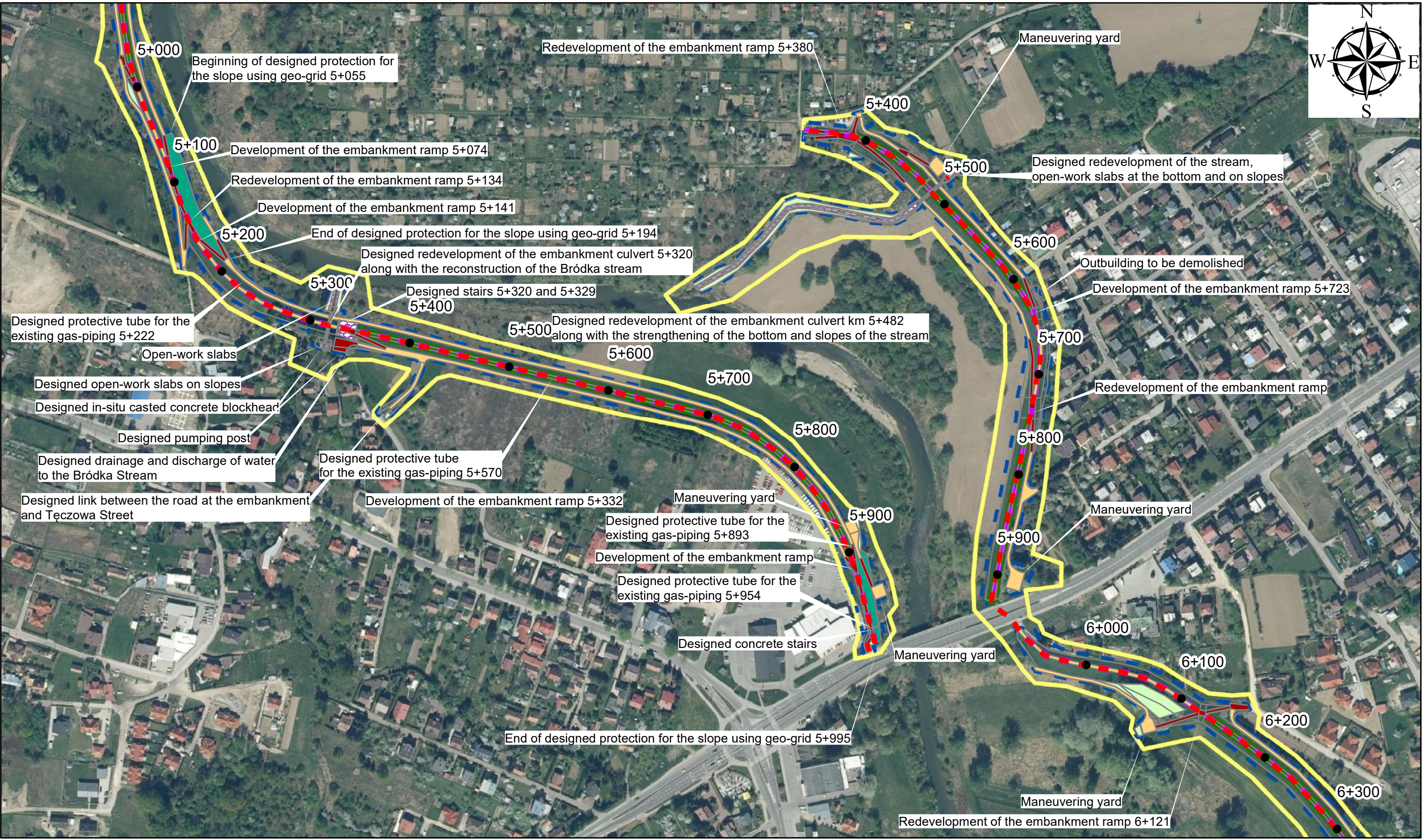
**Appendix No. 10: Map with location of elements of the Contract**

**SHEET 4**

0 0,1 0,2 km

3D.2/2 Expansion of the left and right embankment of the Biala River in the Tarnow Municipality and the City of Tarnow





**Legend**

● Mileage of embankment	■ Anti-filtration membrane	■ Hardening with concrete slabs
--- Axis of the embankment	■ Strengthening with grasscrete	■ Designed sowing grass
— Designed embankment	■ Leveling of land - sowing grass	— Investment boundary
■ Completing the losses of existing concrete	■ Securing the slope with geogrid	— Environmental Conditions
■ Hardening with crushed stone		

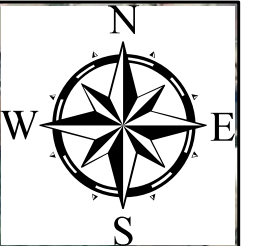
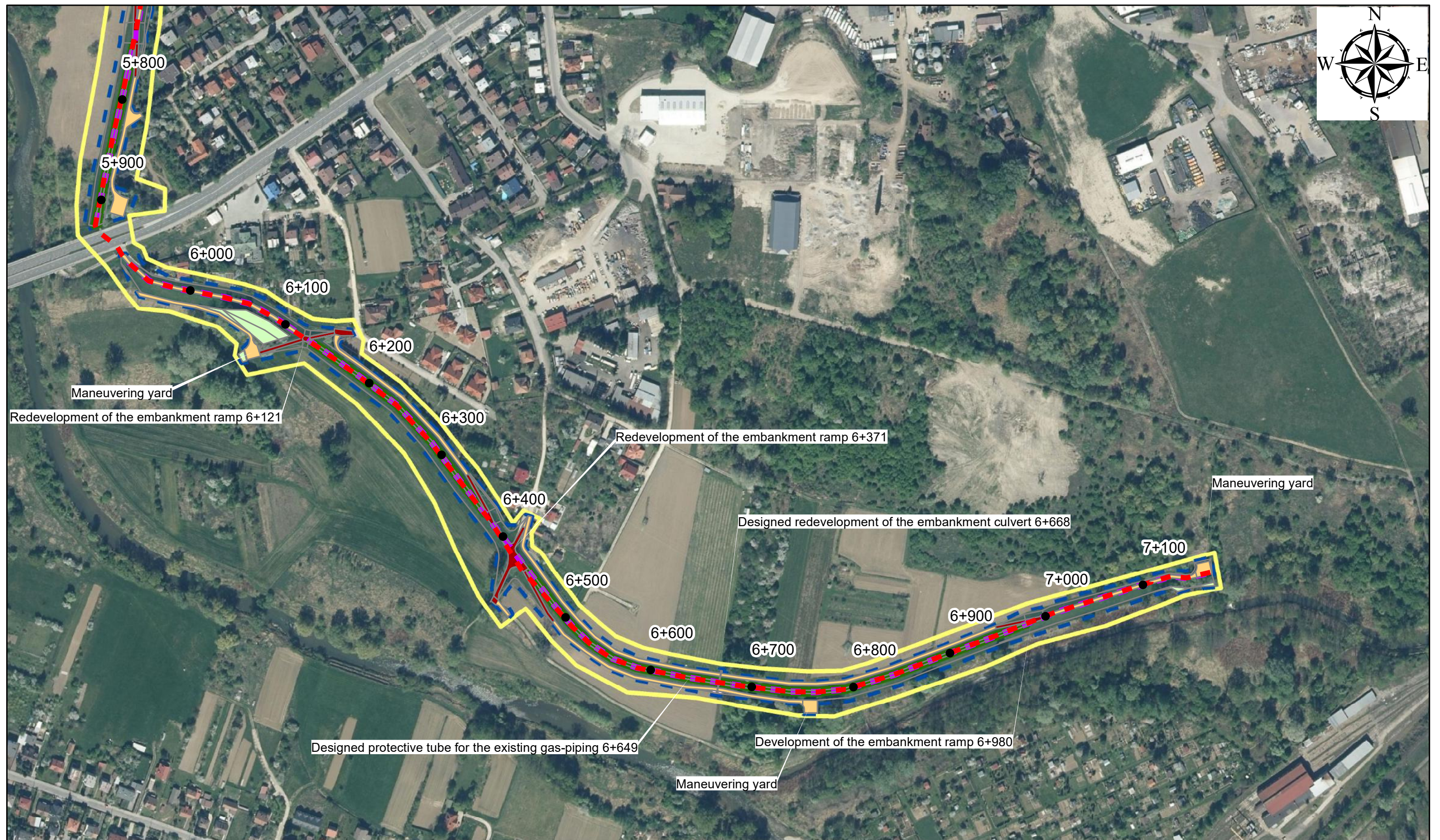
**Appendix No. 10: Map with locatin of elements of the Contract**

**SHEET 5**

3D.2/2 Expansion of the left and right embankment of the Biala River in the Tarnow Municipality and the City of Tarnow

0 0,1 0,2 km





## Legend

- |  |                                     |                                 |
|--|-------------------------------------|---------------------------------|
| ● Mileage of embankment                      | ■ Anti-filtration membrane          | ■ Hardening with concrete slabs |
| — Axis of the embankment                     | ■ Strengthening with grasscrete     | ■ Designed sowing grass         |
| — Designed embankment                        | ■ Leveling of land - sowing grass   | ■ Investment boundary           |
| ■ Completing the losses of existing concrete | ■ Securing the slope with a geogrid | ■ Environmental Conditions      |
| ■ Hardening with crushed stone               |                                     |                                 |

## Appendix No. 10: Map with location of elements of the Contract SHEET 6

3D.2/2 Expansion of the left and right embankment of the Biala River  
in the Tarnow Municipality and the City of Tarnow

