

Państwowe Gospodarstwo Wodne Wody Polskie
[State Water Holding Polish Waters]
Regionalny Zarząd Gospodarki Wodnej we Wrocławiu
[Regional Water Management Authority in Wrocław]

ANNEXE No. 3 TO THE ENVIRONMENTAL MANAGEMENT PLAN

DRAFT

ODRA-VISTULA FLOOD MANAGEMENT PROJECT - 8524 PI

Environmental category B – pursuant to WB OP 4.01

Component 2:

Flood protection for Kłodzka Valley

Contract for works 2A.1:

Construction of “Boboszew” - a dry flood control reservoir on Nysa Kłodzka River and construction of “Roztoki Bystrzyckie” - a dry flood control reservoir on Goworówka Stream

Task 2A.1/1:

Construction of Boboszew” - a dry flood control reservoir on Nysa Kłodzka River

Issue	Date	Author	Checked by	Approval by the Client	Description
	12.05.2021r.	Monika Jaworska	Wojciech Lewandowski		

ODRA - VISTULA FLOOD MANAGEMENT PROJECT

co-financed by:

World Bank, Loan Agreement No. 8524 PL

Council of Europe Development Bank, Frameworks Loan Agreement No. LD 1866

Cohesion Fund of the European Union (IEOP 2014- 2020)

State budget

ENVIRONMENTAL MANAGEMENT PLAN

Component: *2 - Flood protection for Kotlina Kłodzka*

Sub-component: *2A – Active protection*

Contract: *2A.1 - Construction of “Boboszow” - a dry flood control reservoir on Nysa Kłodzka River and construction of “Roztoki Bystrzyckie” - a dry flood control reservoir on Goworówka Stream*

Part of the Contract: *2A.1/1 implementation Construction of a dry flood control reservoir on Nysa Kłodzka River in Boboszow*

Project Implementation Unit:

Państwowe Gospodarstwo Wodne Wody Polskie [State Water Holding Polish Waters]

Regionalny Zarząd Gospodarki Wodnej we Wrocławiu [Regional Water Management Authority in Wrocław]

Authors of the study:

Państwowe Gospodarstwo Wodne Wody Polskie [State Water Holding Polish Waters]

Regionalny Zarząd Gospodarki Wodnej we Wrocławiu [Regional Water Management Authority in Wrocław]

PIU OVFMP

Technical support consultant - Joint Venture SWECO Polska Sp. z o. o., SWECO Nederland B.V.

Wrocław, May 2021

Table of contents

1. Introduction.....	4
2. Environmental conditions for the contract implementation.....	6
3. Public consultations	8

1. INTRODUCTION

One of the elements within the implemented 2A.1/1 Contract titled *Construction of "Boboszow" - a dry flood control reservoir on Nysa Kłodzka River* is relocation of Boboszów – Pisary road along the section colliding with the designed reservoir, its length being 1.22 km, which will be routed along the right bank (north-west) of the reservoir's basin and dam. The road gradeline will be raised by 1.30 m above the maximum water damming level within the reservoir basin and it will provide permanent connection between Boboszow and Pisary, in all reservoir operation connections (Dwg. 1).

During the works execution period involving the relocated road section of 119952D municipal road the Contractor is obliged to maintain a road connection between Boboszow and Pisary. The condition was reflected as a mitigating activity specified in item No. 3 of Appendix No. 1 to the Environmental Management Plan and as a monitoring activity in item No. 3 of Appendix 2 to the Environmental Management Plan.

The Contractor performing the construction works has already made a fragment of 119952D road pursuant to the 2A.1/1 Contract requirements and, in accordance with the works programme, in the beginning of June the works meant to connect the already made road section to the existing 119952D municipal road and the national road No. 33 should begin. Considering the roads connection technology, the existing field conditions and, first of all, safety, it is not possible to perform the works in such a way that during their execution the road connection between Boboszów and Pisary is maintained (required by the EMP). That is why, for the works execution period referred to hereinabove, i.e. for approximately 3 months, the road will be totally closed. Therefore access for Pisary inhabitants to Boboszow will be prevented (border crossing with the Czechia) along the current road.

The situation caused that a diversion along the existing roads has been suggested and specified (in accordance with Dwg. 1 included in the Annexe to the EMP). The detour will be directed along other public roads and general access roads located outside the reservoir's Construction Site and it will consist of the following sections:

- 1) Pisary – Dolnik; the section routed within the county roads No. 3269D. The road along the section partially runs through the wooded slope (near Dolnik).
- 2) Dolnik – Międzylesie - the section routed within the county road No. 3269D, running mainly within the dispersed municipal development. Dolnik, in Międzylesie the specified detour to the national road No. 33 (DK 33),
- 3) Międzylesie – Boboszów; the section within DK 33 road running through Międzylesie, and then within the dispersed development of Boboszów, to the intersection with the borough road No. 119952D.

the road connection between Pisary and Międzylesie will be provided by taking advantage of the suggested detour. Sadly, this will lengthen the travelling time from Pisary to Boboszow by approx. 10-15 minutes and increase the distance by 7 km. Lengthening the travelling time and distance will also pertain to this part of Pisary inhabitants who, taking advantage of their own means of transport, commute to work in the Czech Republic.

The travel time and distance from Pisary to Międzylesie does not greatly differ in the existing conditions (the route through Boboszow) and the planned detour (the route through Dolnik).

The detour will be routed along municipal, country and national roads enabling safe and collision-free connection for the inhabitants of Pisary with Miedzylesie and Boboszew.

Detailed arrangements regarding the detour route (including additional signage, activities related to ensuring safety conditions) have been included in the *Temporary Traffic Control Project* agreed upon and approved by the roads authorities.

Traffic on the road section between Boboszew and Pisary is solely of a local nature, of low intensity, therefore setting a new temporary route to Międzylesie and Boboszew will not cause impediments within the designated detour routes.

2. ENVIRONMENTAL CONDITIONS FOR THE CONTRACT IMPLEMENTATION

The planned traffic organization change, related to the 3 months closure of the municipal road section, is due to the necessity of connecting the relocated section of the municipal road with the national road No. 33 and the municipal road outside the reservoir basin. The temporary closure of the municipal road, in relation to the situation identified during the environmental approvals stage and EMP development, does not generate new impacts on the environment. There is no need to impose additional works execution conditions within this scope.

Thus closing the municipal road section until the said works are performed will make it possible to complete and commission the new road and avoid potentially unsafe situations.

The social aspect related to the planned temporary closure of the municipal road section, until the new road section is connected to the existing road network, has been analysed regarding the requirements described in the EMP document. Moreover, it needs to be emphasised that PGW WP [State Water Holding Polish Waters] Regional Water Management Authority in Wroclaw have the permit for temporary closure of the road section, what is expressed by signing, on 12.05.2021, the annexe to the Memorandum of understanding dated 19.10.2015 concluded between PGW WP RZGW in Wroclaw and the Mayor of Miedzylesie, being a representative of the local community. The Annexe to this Memorandum confirms consent for temporary closure of the road.

The works Contractor is obliged to exercise all measures that might be adequate for the type of the performed works, conditions of works execution defined in Appendices 1 and 2 EMP for 2A.1/1 Contract for works.

Should such need be determined at the works execution stage, any required administrative decisions shall be obtained by the Contractor.

What is modified is the condition related to the works execution programme, item 3 of Appendix No. 1 to the Environmental Management Plan and item 3 of Appendix No. 2 to the Environmental Management Plan, i.e. maintaining the road connection between Boboszków and Pisary villages

- ***Maintaining the traffic connection between Boboszków, Pisary and Międzylesie***

[insofar text]

During the entire construction period direct road connection between Boboszow and Pisary needs to be provided (within the municipal road 119952D, along the section subject to relocation in connection with the reservoir construction), available for passenger cars, lorries and buses.

An optimum solution would be to construct a new 119952D municipal road section prior to commencing with the works stage that requires closure and liquidation of the insofar section of the road.

[after modification]

During the construction period a road connection should be provided between Boboszów and Pisary villages (ultimately providing access to the DK33 road and the town of Międzylesie). This connection may include a part of the municipal road 119952D (section to be rerouted in connection with the construction of the reservoir) while maintaining accessibility for cars, trucks and buses.

Should it be impossible to maintain the road connection available for passenger cars, trucks and buses on the section of the municipal road 119952D, subject to being rerouted in respect to the construction of the reservoir, it is necessary to designate detour routes ensuring appropriate safety conditions for road and pedestrian users. Temporary traffic control projects, which need to be agreed upon and approved by the road authorities, will be developed for the detour routes.

3. PUBLIC CONSULTATIONS

The documents draft is subject to public consultations carried out in accordance with the requirements specified in the World Bank operational policies (OP 4.01).

Once the Annexe draft to the EMP is developed, its digital version is placed in public access websites and the paper version is available for review for the interested parties. Detailed information about the possibility of reviewing the document, submitting remarks and motions (indicating detailed contact data, such as e-mail address, the location where the document draft can be read, office hours, phone number) are available for the public in the local press and websites of the entity implementing the Contract and being a subject of the Annexe to the EMP.

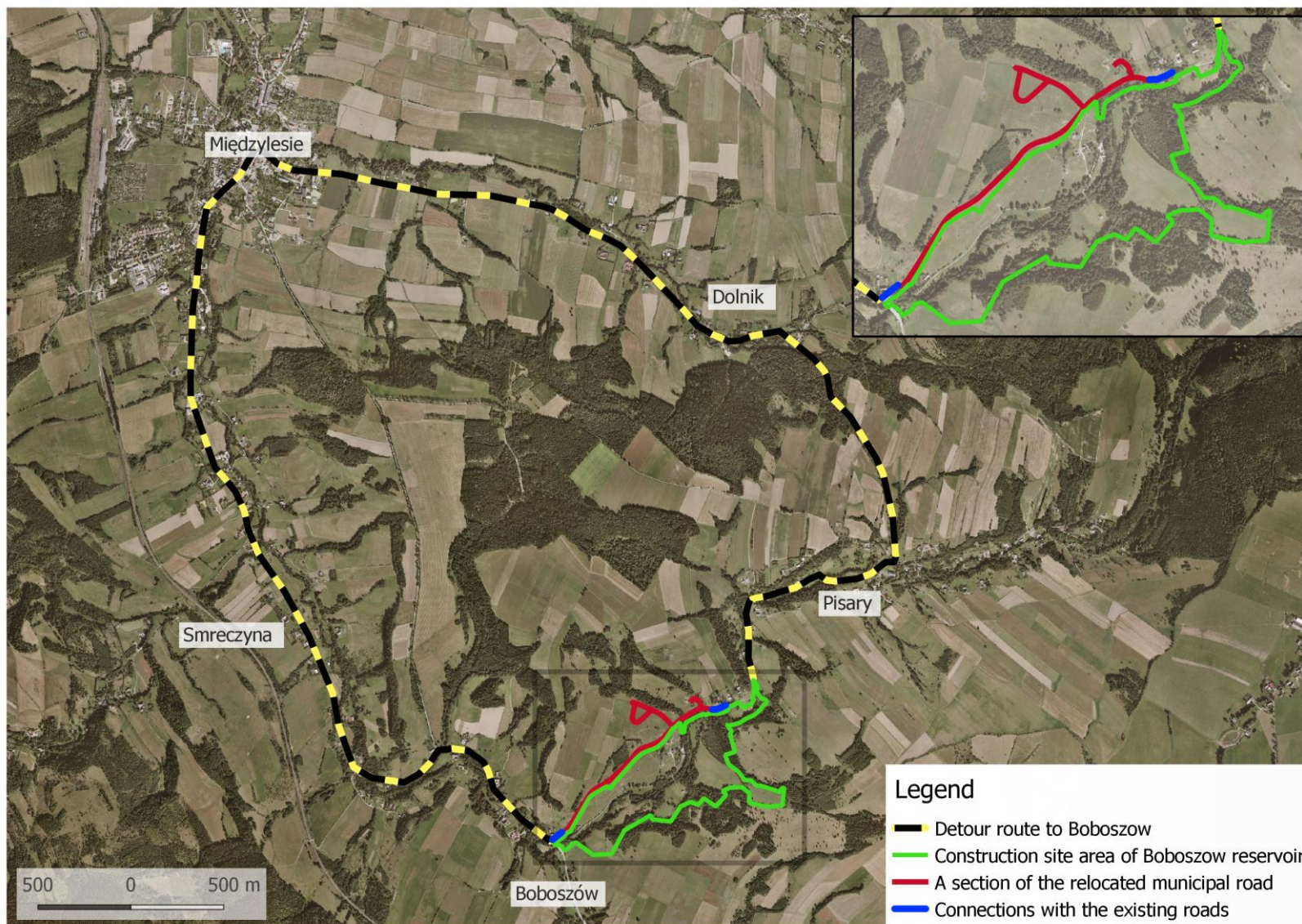
Owing to the current COVID-19 situation, the action plan related to making the Annexe to the Environmental Management Plan public takes into account the guidelines of the World Bank's Technical Note "Public consultations and involvement of the interested parties in the activities aided by the World Bank in the case of restrictions regarding public meetings".

The meetings, so far organised to make the document public in an open discussion form, will be replaced by a webinar, i.e. an internet meeting conducted and run by means of webcast technology, that will enable mutual communication between the individual conducting the meeting and the participants, using virtual instruments. The meeting will be organised through Microsoft teams application. The software makes it possible to organise and conduct the webinar, including presentations or screen view, as well as interconnecting between several individual, asking questions by the participants through the chat application (only in writing) and answering them by the individuals conducting the meeting. The participants only need access to the Internet and a web browser - in order to join the webinar no installation of any other software on the participant's computer is required.

Considering this the announcement about making the Annexe draft to the EMP available will include information about the webinar's date and start time, plus indication that the link to join the webinar will be available at the Investor's website.

In order to ask questions during the EMP publication a toll-free line will be activated. Information about the line will also be provided in the announcement about making the EMP public.

The remarks reported during the document publication, once considered, will be implemented in the final Annexe to EMP version and, in this form, they will be sent to the World Bank to obtain "No objection".



Dwg. 1 Location of the access route - Pisary - Międzyzlesie, Pisary – Boboszew.