

Appendix no. 10: Map with location of the Contracts' elements
INDEX OF SHEETS

Contract 3A.1 Modernization of Vistula embankments in Cracow
Works Contract 3A.1/1

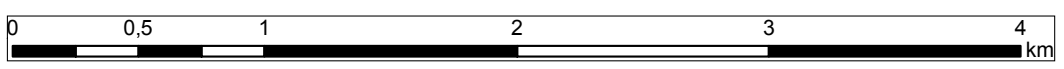
- Section 1 -** The left embankment of the Vistula river from Wanda bridge to the Przewóz barrage, including the backwater embankment of the Dłubnia river - Sheet 4, 5, 6
- Section 2 -** The left embankment of the Vistula river from Przewóz barrage to Suchy Jar - Sheet 7, 8

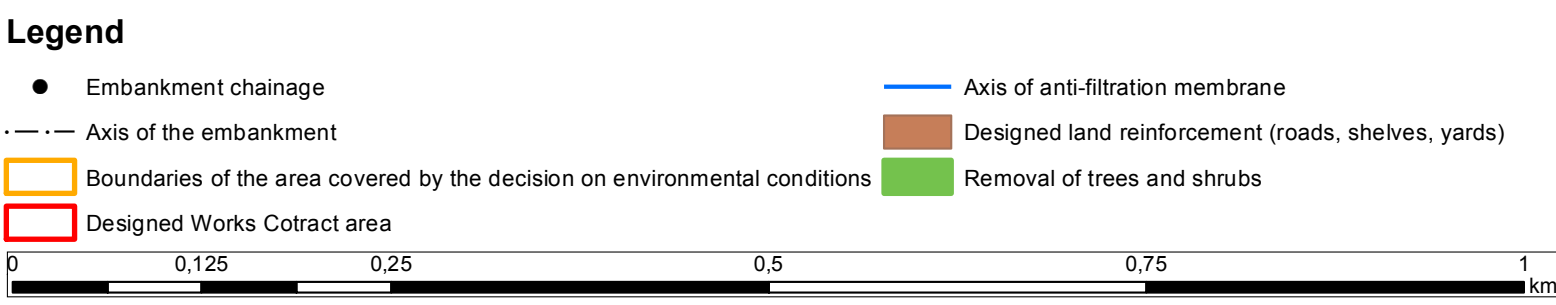
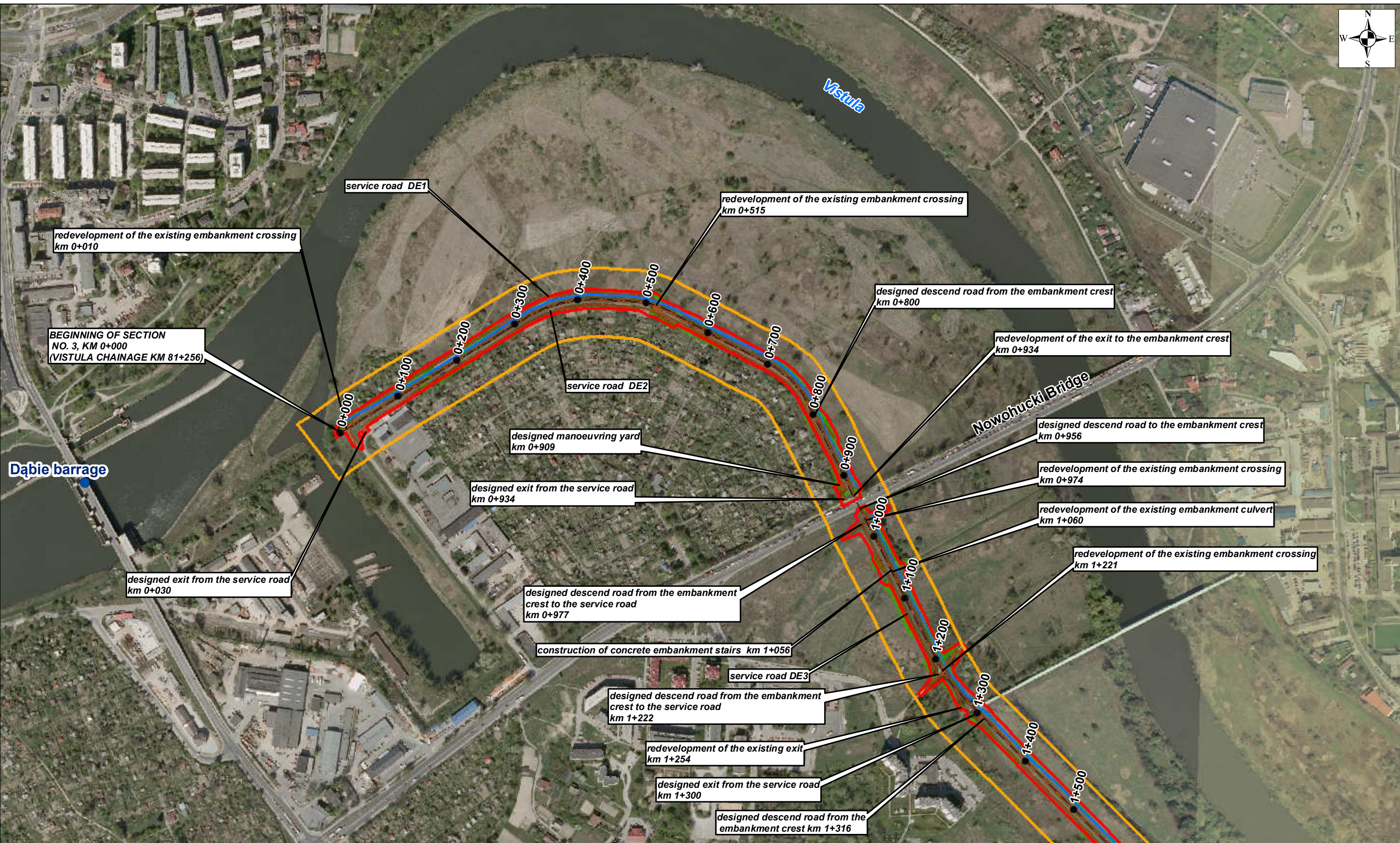
Works Contract 3A.1/2

- Section 3 -** The right embankment of the Vistula river from Dabie to the Przewóz barrage - Sheet 1, 2, 3, 4, 6, 7

Legend

- Boundaries of the area covered by the decision on environmental conditions
- Designed Works Contract area





SHEET 1 **Appendix no. 10: Map with location of the Contracts' elements**

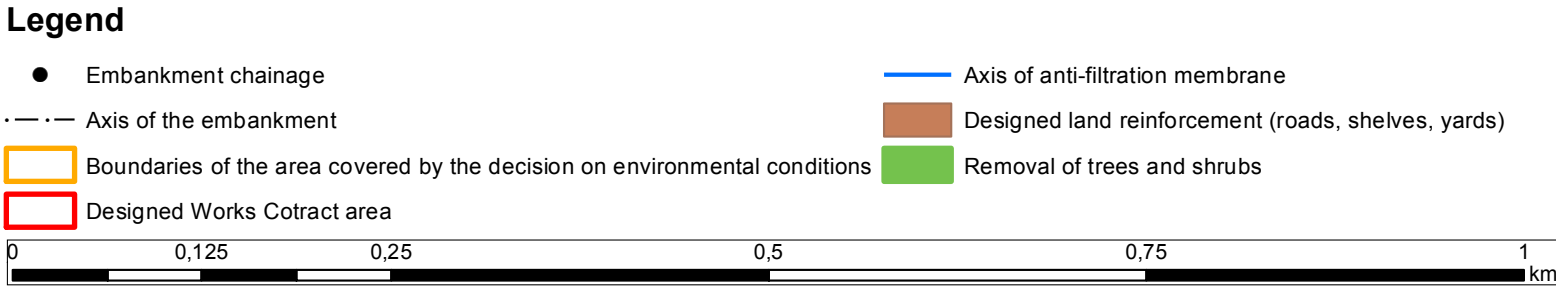
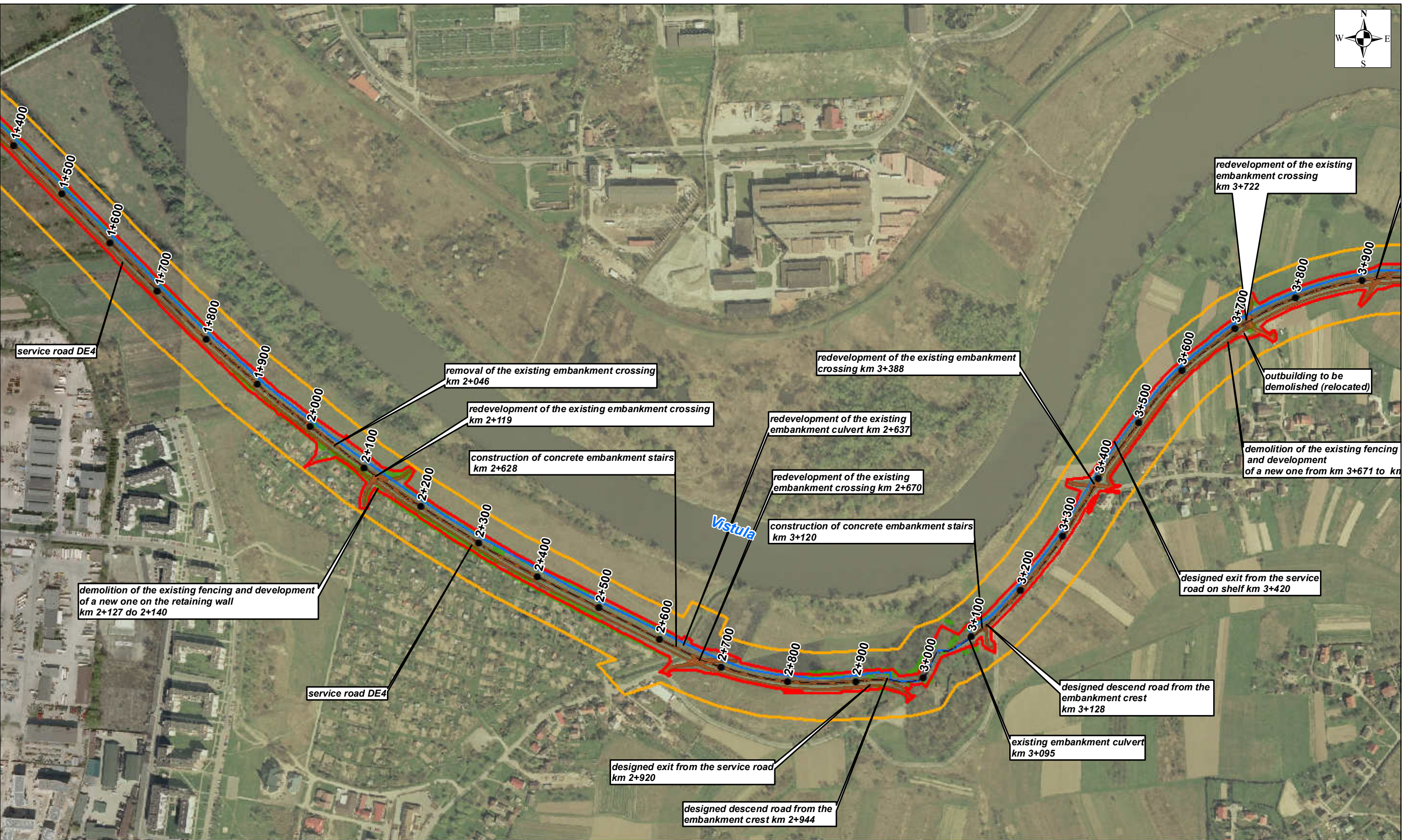
Contract 3A.1 Modernization of Vistula embankments in Cracow
Works Contract 3A.1/1

Section 1 - The left embankment of the Vistula river from Wanda bridge to the Przewóz barrage, including the backwater embankment of the Dłubnia river - Sheet 4, 5, 6

Section 2 - The left embankment of the Vistula river from Przewóz barrage to Suchy Jar - Sheet 7, 8

Works Contract 3A.1/2

Section 3 - The right embankment of the Vistula river from Dąbie to the Przewóz barrage - Sheet 1, 2, 3, 4, 6, 7



SHEET 2 **Appendix no. 10: Map with location of the Contracts' elements**

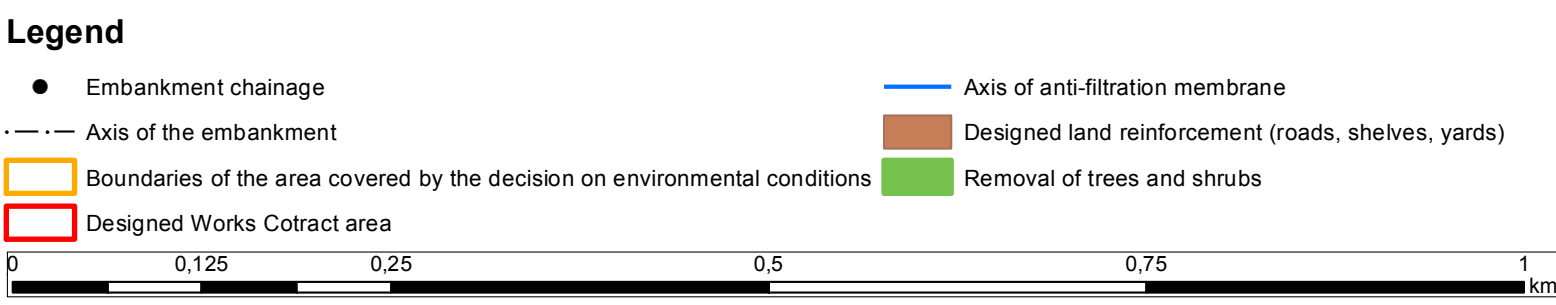
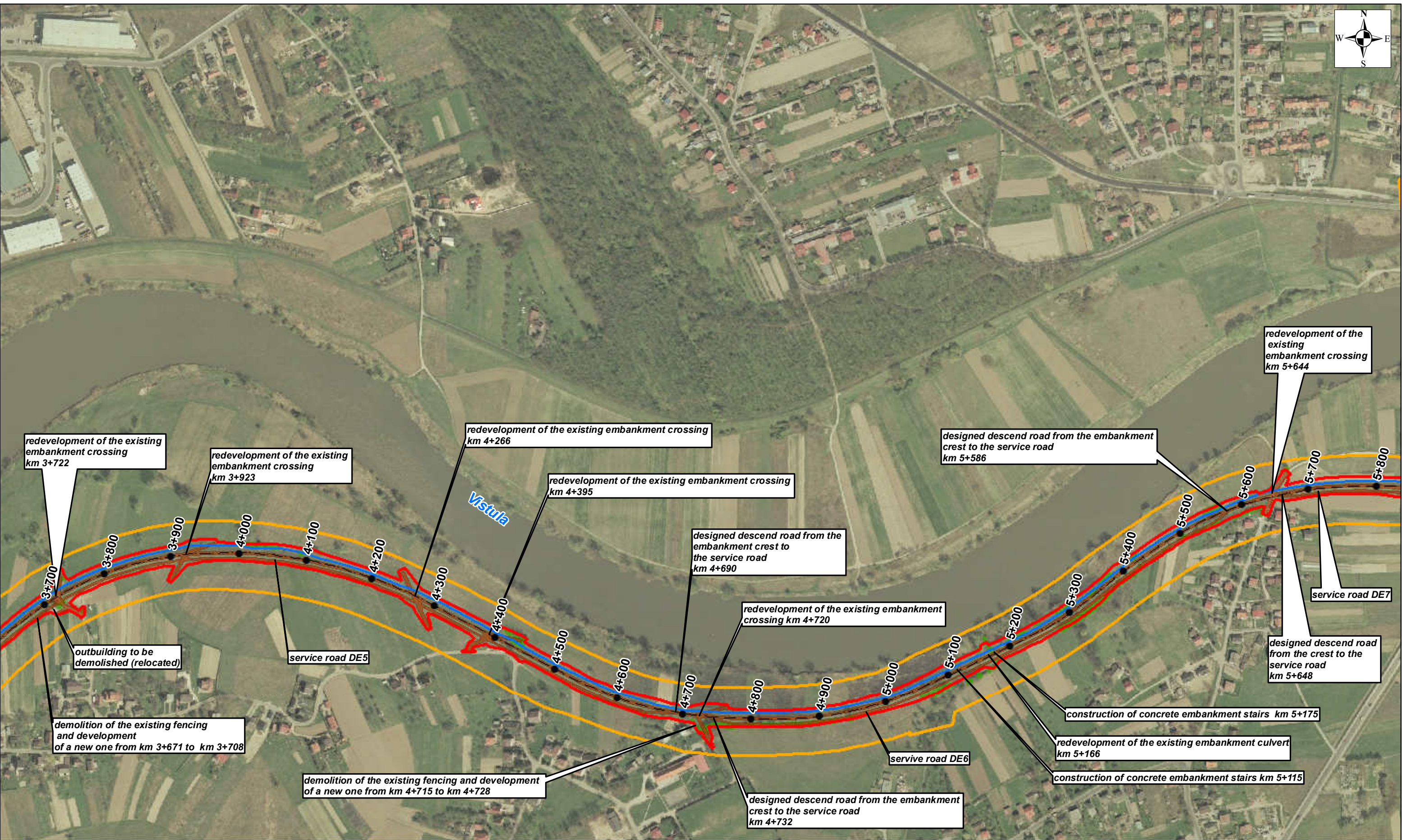
Contract 3A.1 Modernization of Vistula embankments in Cracow
Works Contract 3A.1/1

Section 1 - The left embankment of the Vistula river from Wanda bridge to the Przewóz barrage, including the backwater embankment of the Dłubnia river - Sheet 4, 5, 6

Section 2 - The left embankment of the Vistula river from Przewóz barrage to Suchy Jar - Sheet 7, 8

Works Contract 3A.1/2

Section 3 - The right embankment of the Vistula river from Dabie to the Przewóz barrage - Sheet 1, 2, 3, 4, 6, 7



SHEET 3 **Appendix no. 10: Map with location of the Contracts' elements**

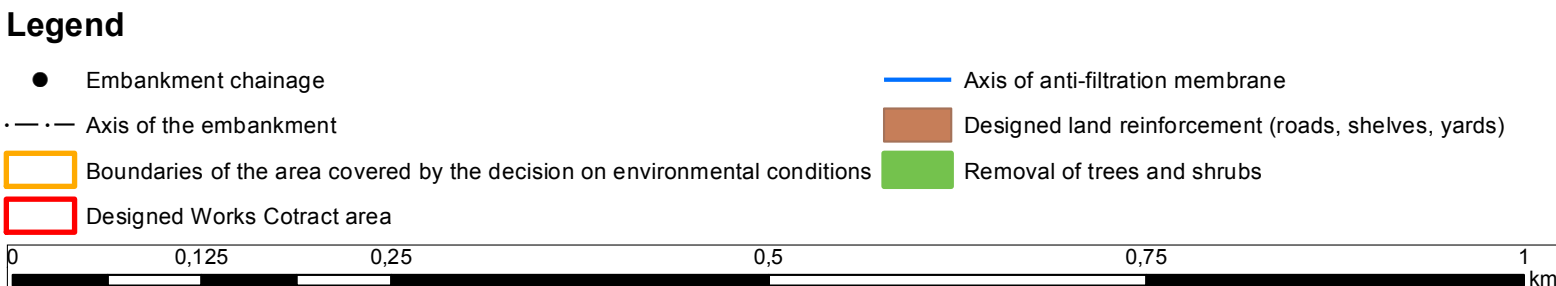
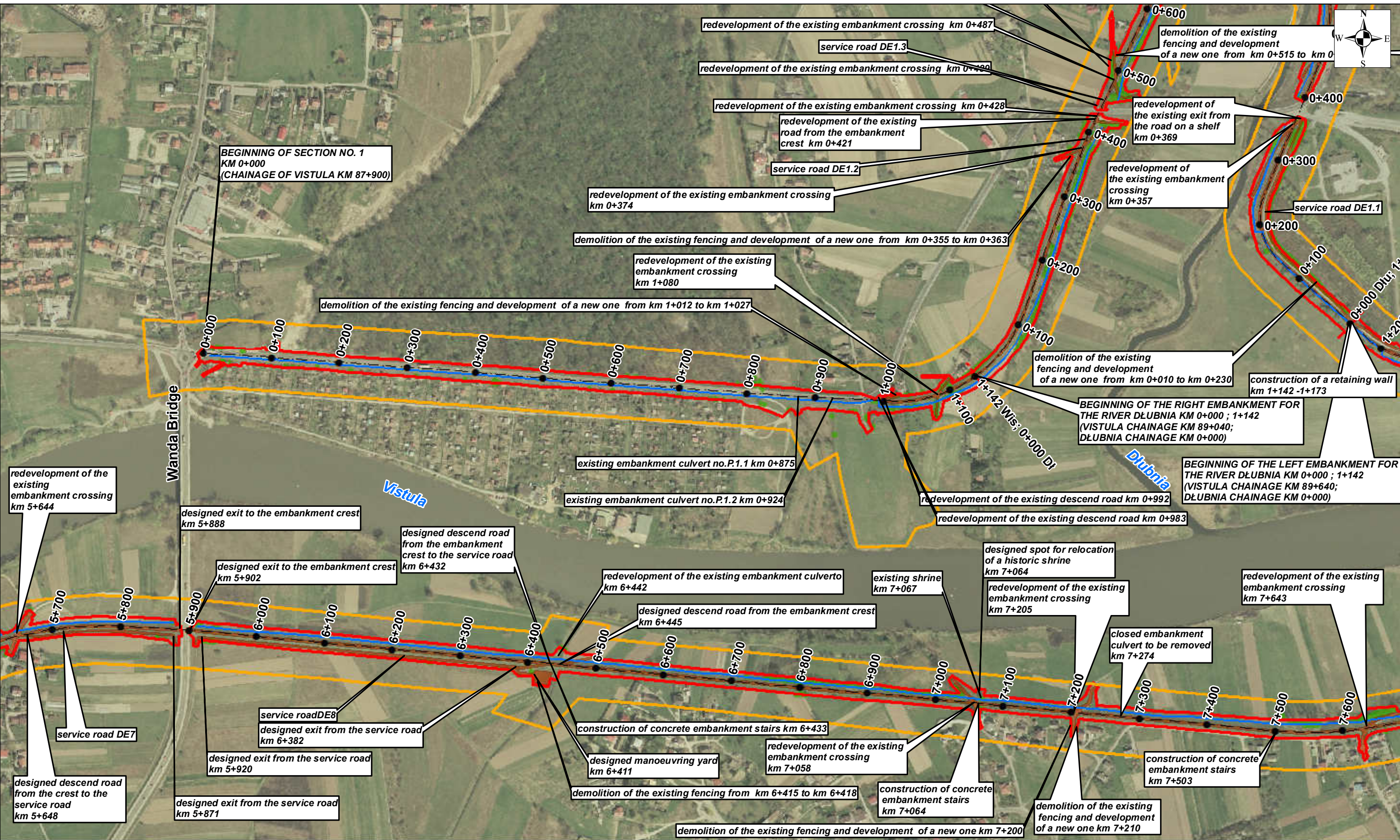
Contract 3A.1 Modernization of Vistula embankments in Cracow
Works Contract 3A.1/1

Section 1 - The left embankment of the Vistula river from Wanda bridge to the Przewóz barrage, including the backwater embankment of the Dłubnia river - Sheet 4, 5, 6

Section 2 - The left embankment of the Vistula river from Przewóz barrage to Suchy Jar - Sheet 7, 8

Works Contract 3A.1/2

Section 3 - The right embankment of the Vistula river from Dabie to the Przewóz barrage - Sheet 1, 2, 3, 4, 6, 7



SHEET 4 Appendix no. 10: Map with location of the Contracts' elements

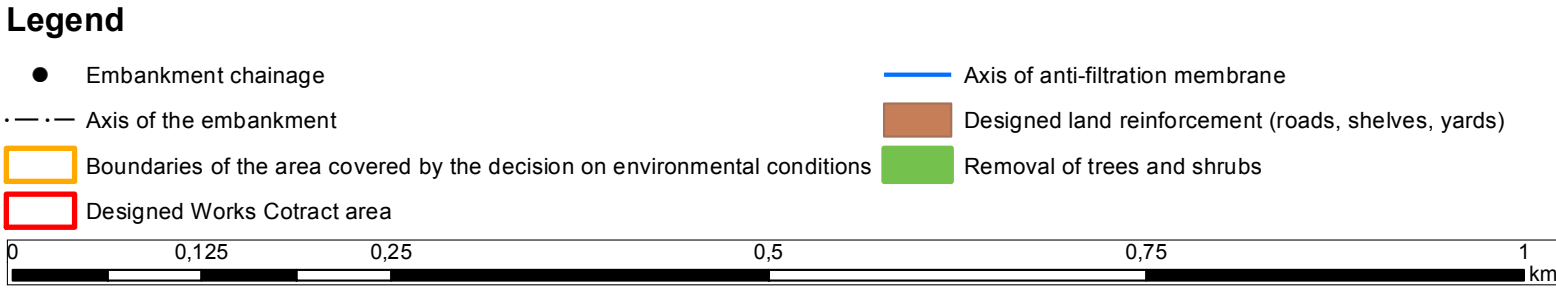
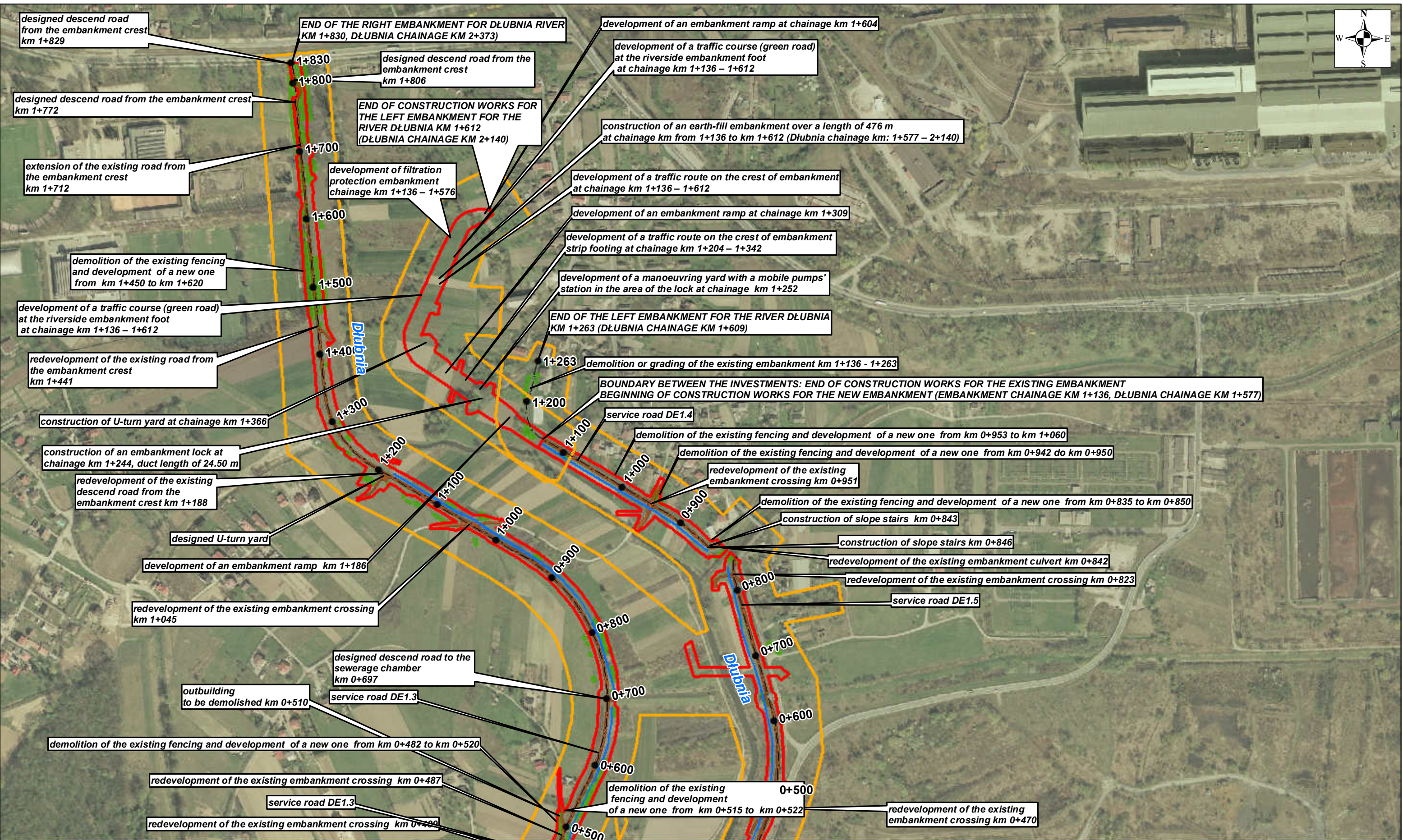
Contract 3A.1 Modernization of Vistula embankments in Cracow
Works Contract 3A.1/1

Section 1 - The left embankment of the Vistula river from Wanda bridge to the Przewóz barrage, including the backwater embankment of the Dłubnia river - Sheet 4, 5, 6

Section 2 - The left embankment of the Vistula river from Przewóz barrage to Suchy Jar - Sheet 7, 8

Works Contract 3A.1/2

Section 3 - The right embankment of the Vistula river from Dabie to the Przewóz barrage - Sheet 1, 2, 3, 4, 6, 7



SHEET 5 Appendix no. 10: Map with location of the Contracts' elements

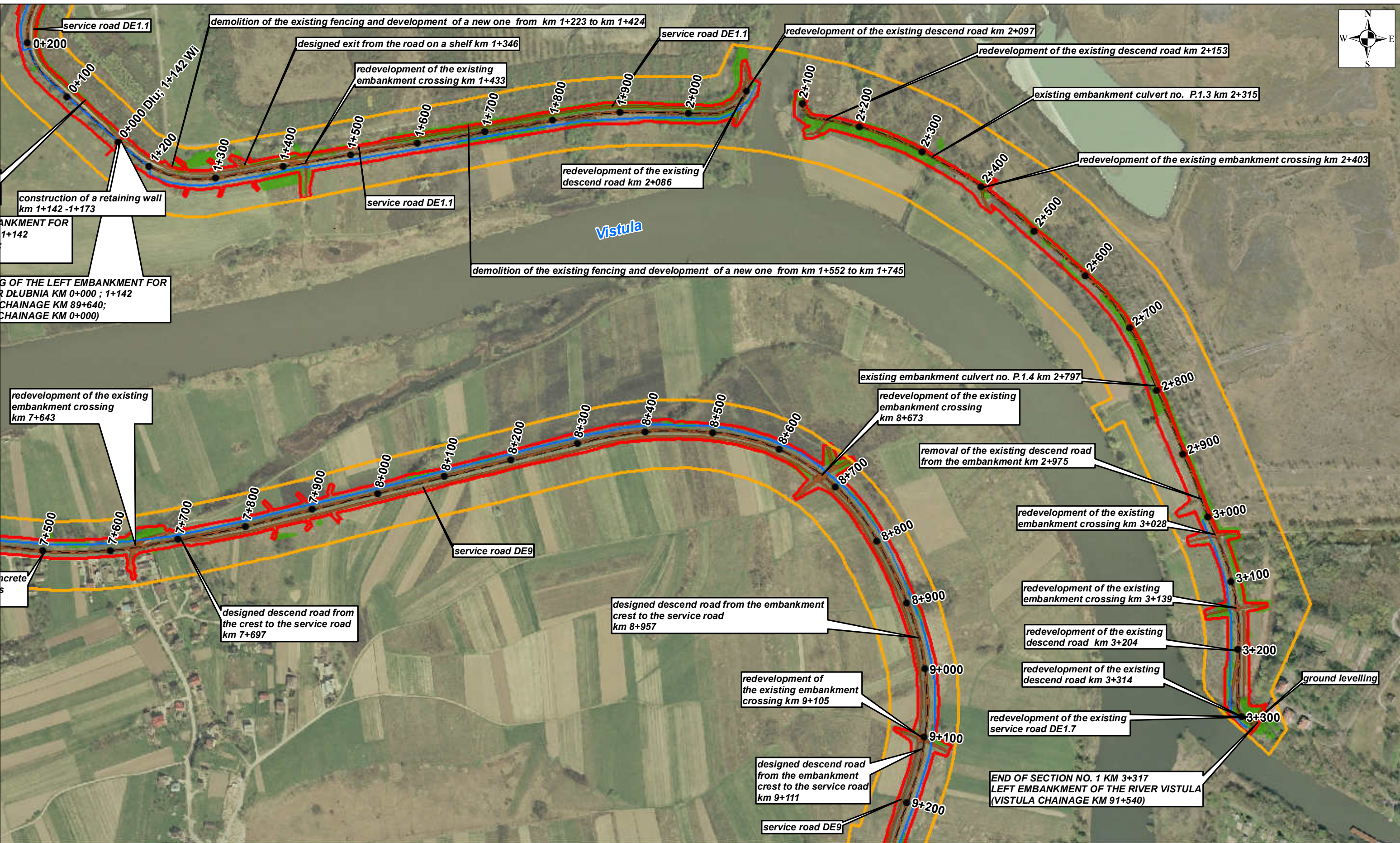
Contract 3A.1 Modernization of Vistula embankments in Cracow
Works Contract 3A.1/1

Section 1 - The left embankment of the Vistula river from Wanda bridge to the Przewóz barrage, including the backwater embankment of the Dłubnia river - Sheet 4, 5, 6

Section 2 - The left embankment of the Vistula river from Przewóz barrage to Suchy Jar - Sheet 7, 8

Works Contract 3A.1/2

Section 3 - The right embankment of the Vistula river from Dabie to the Przewóz barrage - Sheet 1, 2, 3, 4, 6, 7



Legend

- Embankment chainage
- Axis of the embankment
- Axis of anti-filtration membrane
- ▭ Boundaries of the area covered by the decision on environmental conditions
- ▭ Designed Works Contract area
- ▭ Designed land reinforcement (roads, shelves, yards)
- ▭ Removal of trees and shrubs

0 0,125 0,25 0,5 0,75 1 km

SHEET 6 Appendix no. 10: Map with location of the Contracts' elements

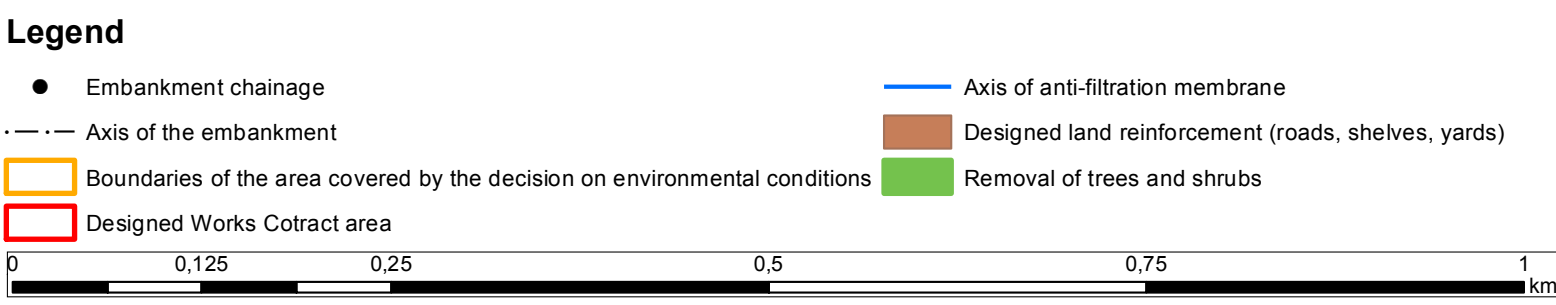
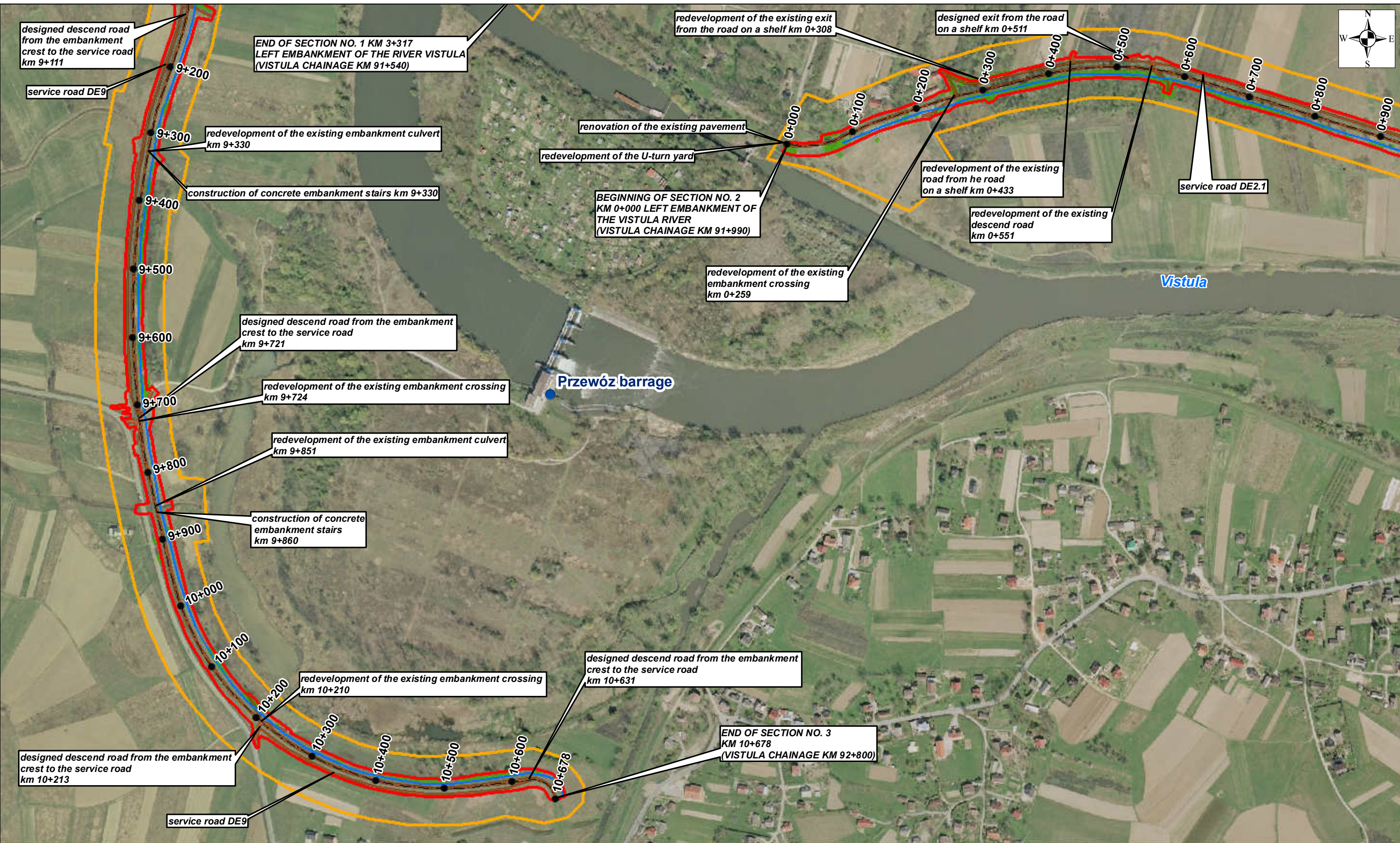
Contract 3A.1 Modernization of Vistula embankments in Cracow
Works Contract 3A.1/1

Section 1 - The left embankment of the Vistula river from Wanda bridge to the Przewóz barrage, including the backwater embankment of the Dłubnia river - Sheet 4, 5, 6

Section 2 - The left embankment of the Vistula river from Przewóz barrage to Suchy Jar - Sheet 7, 8

Works Contract 3A.1/2

Section 3 - The right embankment of the Vistula river from Dabie to the Przewóz barrage - Sheet 1, 2, 3, 4, 6, 7



SHEET 7 **Appendix no. 10: Map with location of the Contracts' elements**

Contract 3A.1 Modernization of Vistula embankments in Cracow
Works Contract 3A.1/1

Section 1 - The left embankment of the Vistula river from Wanda bridge to the Przewóz barrage, including the backwater embankment of the Dłubnia river - Sheet 4, 5, 6

Section 2 - The left embankment of the Vistula river from Przewóz barrage to Suchy Jar - Sheet 7, 8

Works Contract 3A.1/2

Section 3 - The right embankment of the Vistula river from Dabie to the Przewóz barrage - Sheet 1, 2, 3, 4, 6, 7

